



Kobe City Overview

May 17, 2019

Kobe City



[VOYAGER OF THE SEAS]
ボイジャー・オブ・ザ・シーズ 137,276 GT
写真は、2012年(平成24年)8月6日・第4次撮影



Overview of Kobe City



Population 1,527,757 (September 2018)

Number of households 718,127 households
(September 2018)

Area 557.02 km² (September 2018)

Height above sea level: 931.3 m

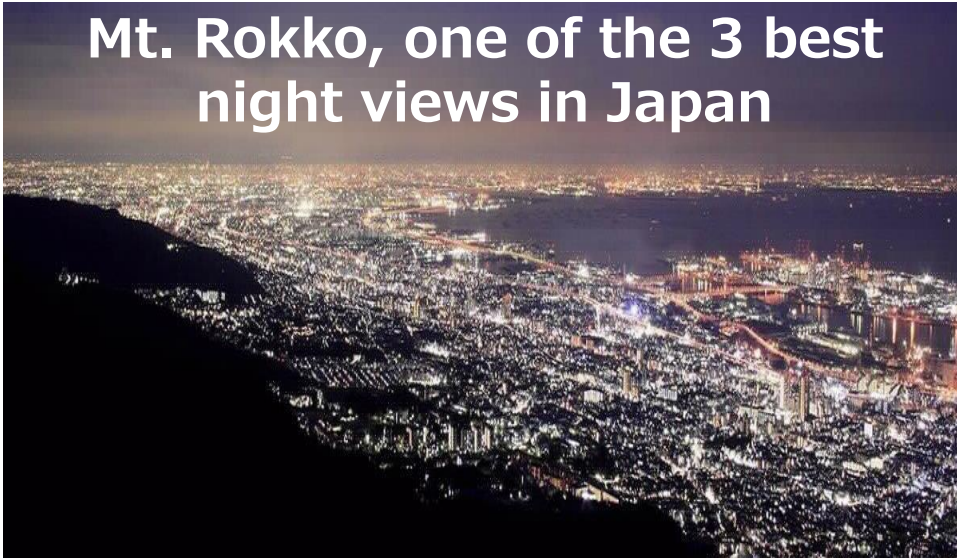
Average temperature of 17.0 °C



Refined Cityscape, Abundant Nature



Mt. Rokko, one of the 3 best night views in Japan



Kitano foreign settlement



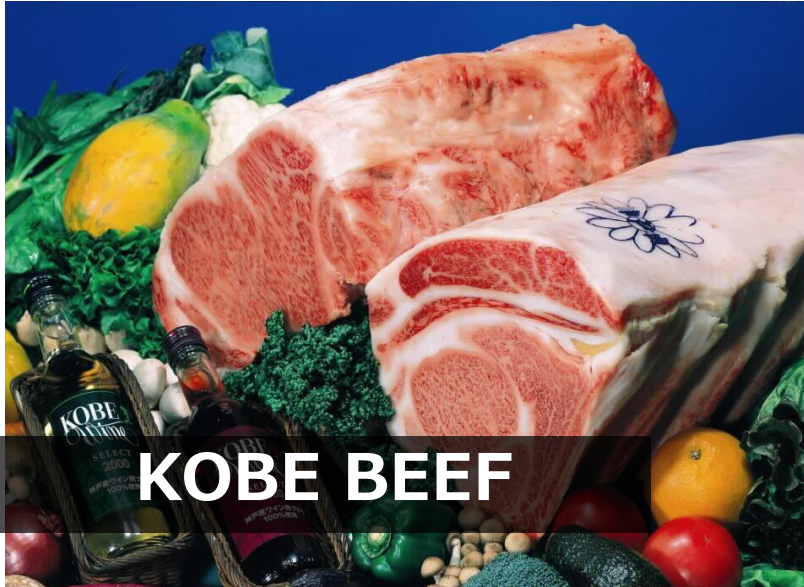
The natural coast of Suma Beach



Arima Onsen, one of the 3 oldest hot springs in Japan



"Kobe Brand"



KOBE BEEF



KOBE SWEETS



NADA SAKE



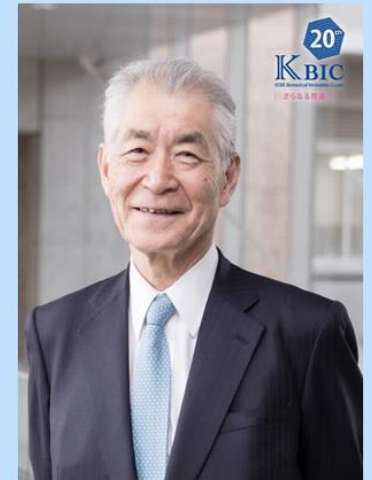
PEARLS



Over 350 Companies / Organizations
9,400 Researchers and Employees



**Joint Winner of the
Nobel Prize in
Physiology or
Medicine 2018!**



We Are a Startup City

To be a city
chosen by young people

Further economic
development in Kobe

Events

GovTech Summit

Infinity Venture Summit



500 Startups
KOBE Accelerator



Urban Innovation
KOBE



+
Subsidies for Innovation Base

Community

Code for Japan

Code for KOBE



Creative Human Resource Development
Personal Exchange & Overseas Training

KOBE Open Innovation

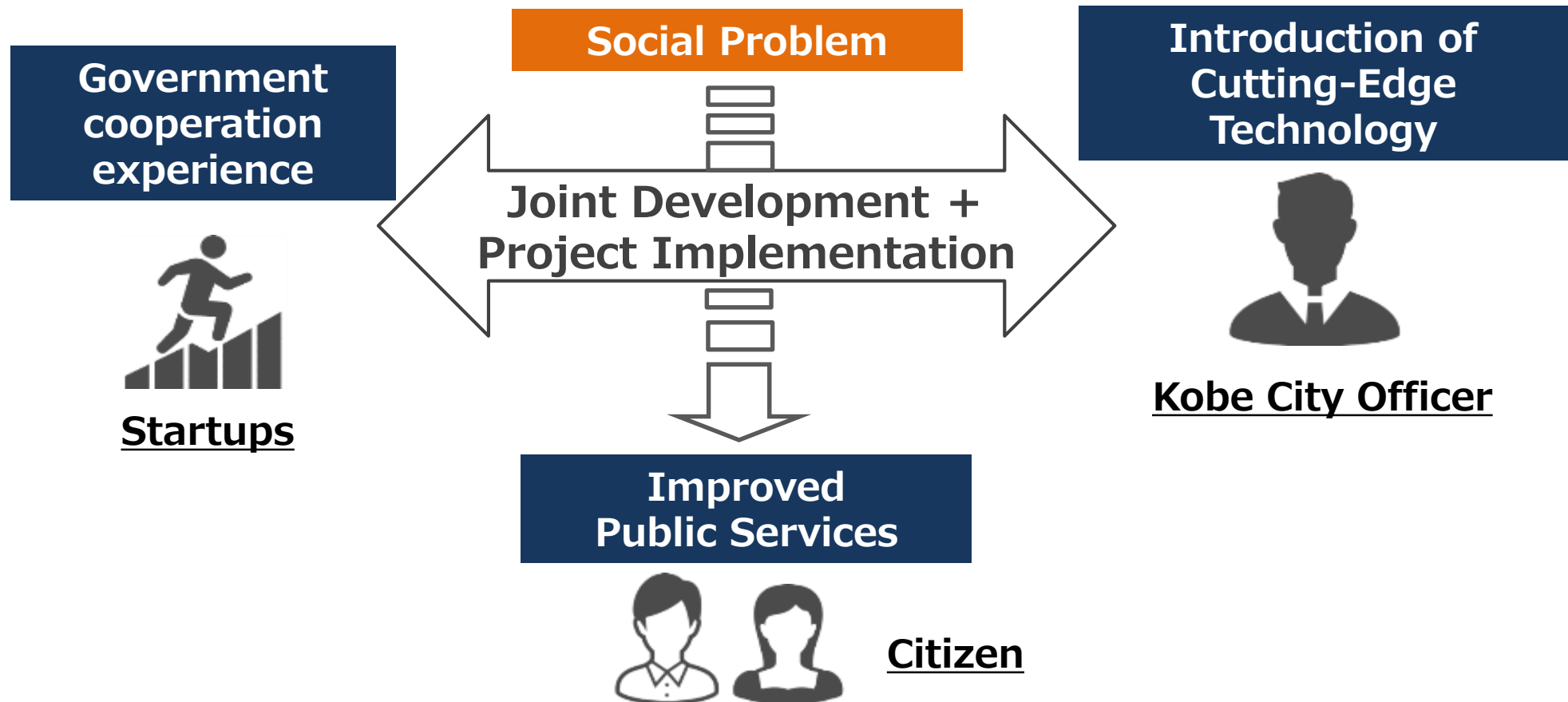


Private Sector

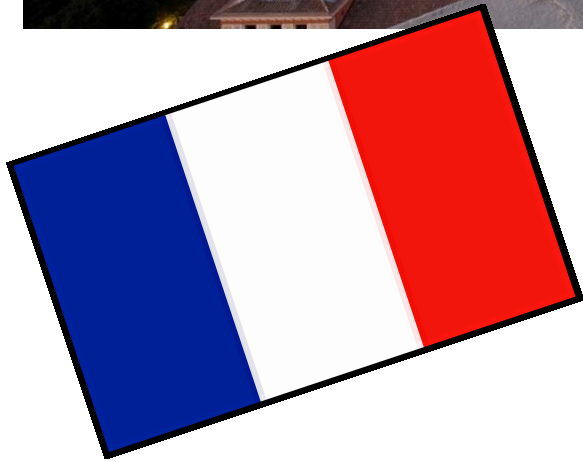
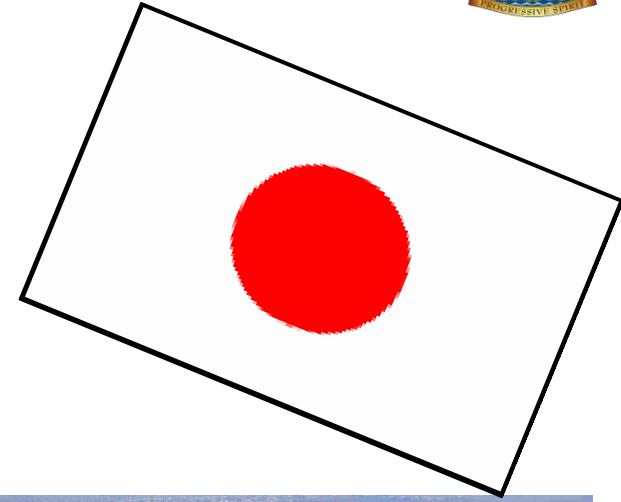
Academy



Pilot Projects to solve Social / Operational problems “with” KOBE



Marseille and Kobe-55th Anniversary



Overview of Kobe Port



Hanshin PORT(KOBE and OSAKA PORT)has been designated as strategic international container port.

Central point of distribution in western Japan that supports the Japanese economy

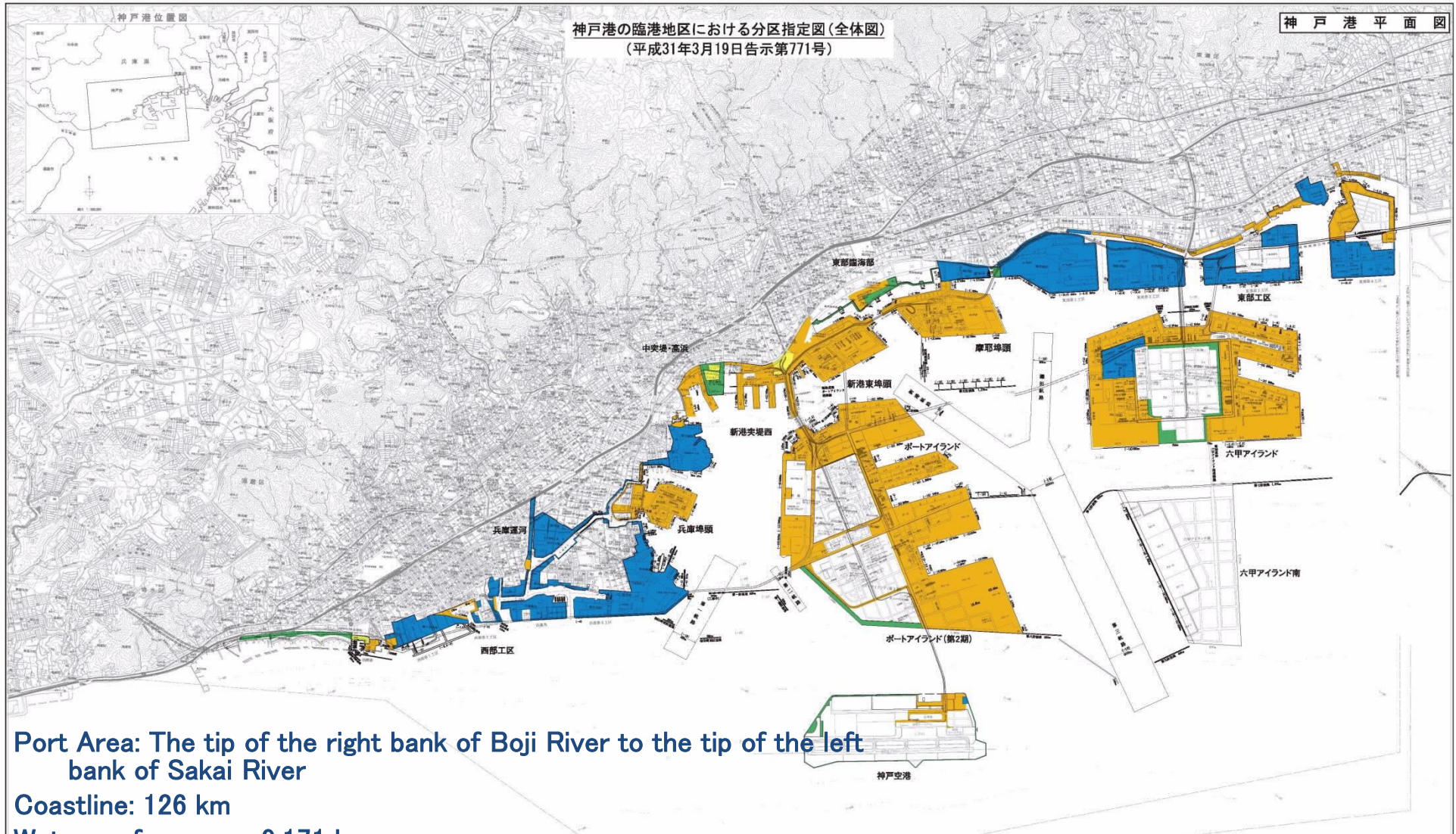


Be suitable for design cities
waterfront zone

KOBE city has been designated
City of Design by UNESCO.



Size of Kobe Port



Port Area: The tip of the right bank of Boji River to the tip of the left bank of Sakai River

Coastline: 126 km

Water surface area: 9,171 ha

Waterfront area: 2,101 ha



The Port of Kobe (2018)



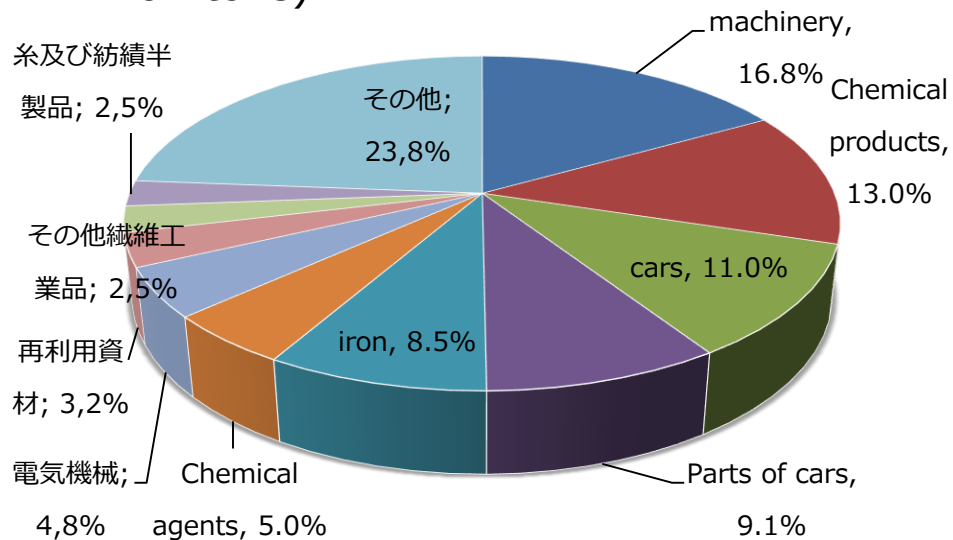
*Total amount handled: 95.49 million tons

(Foreign trade goods: 52.16 million tons, domestic trade goods: 43.32 million tons)

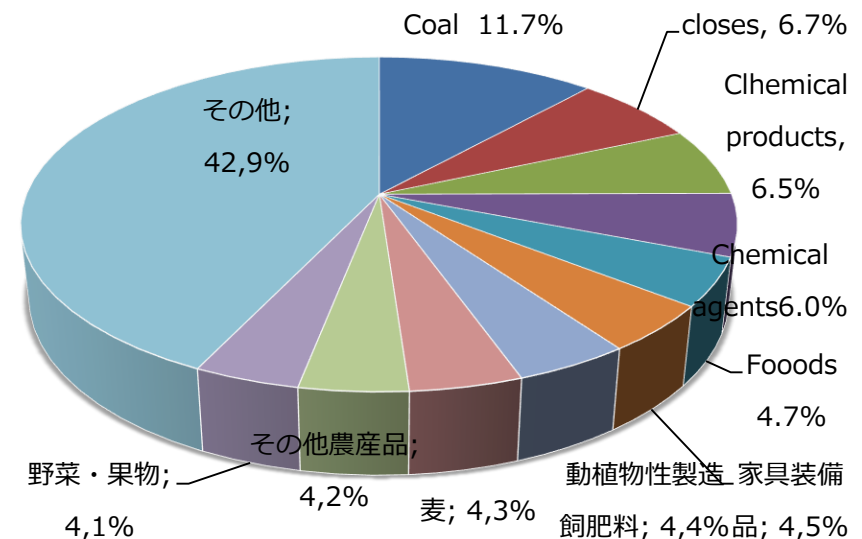
*Total containers handled 2.94 million TEUs

(Foreign Trade Currency: 2.22 million TEU, Domestic Trade Currency: 720,000 TEU)

Breakdown of Export Cargo Types (23.71 million tons)



Breakdown of Imported Cargo Types (28.45 million tons)



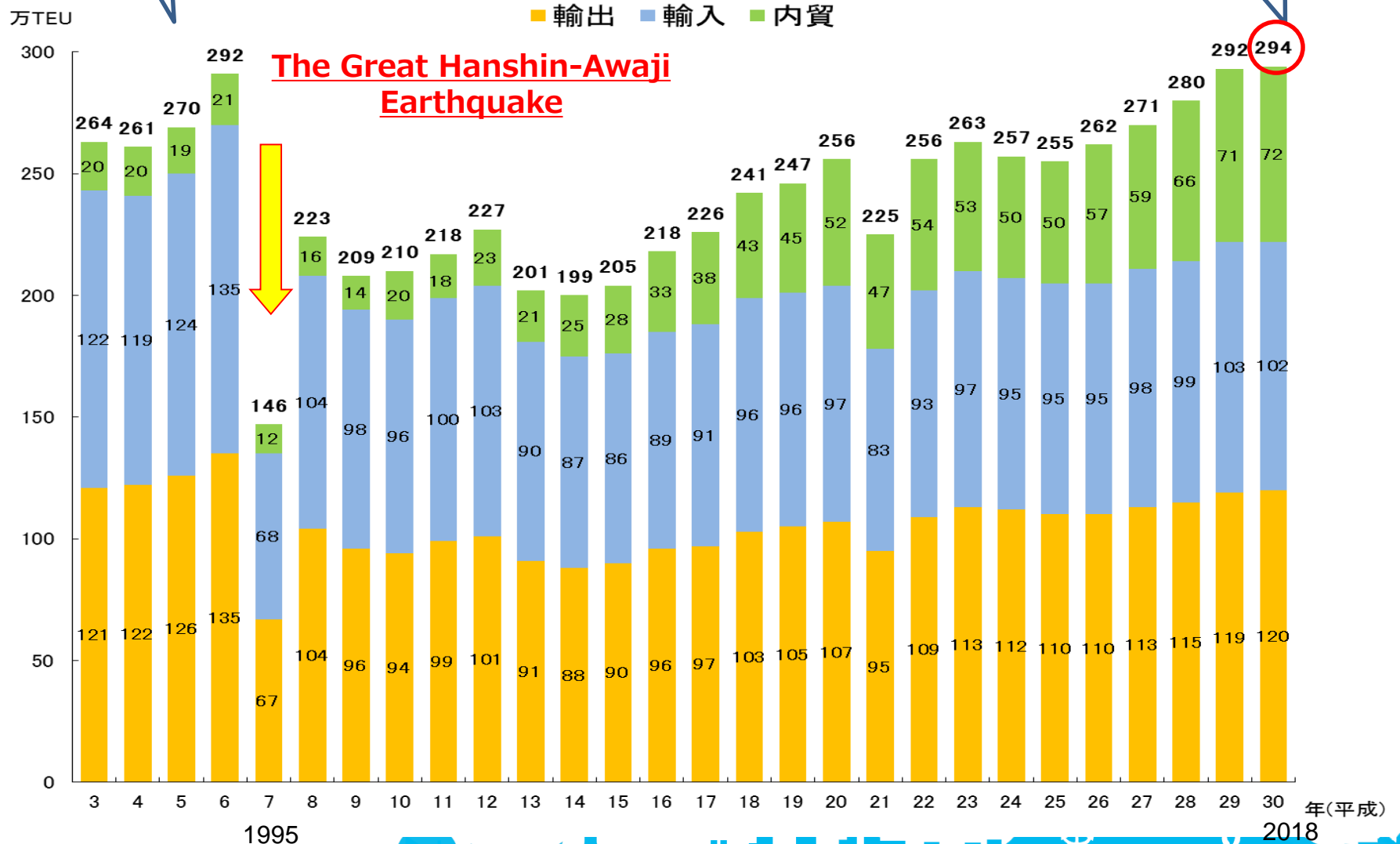
Trends of Kobe Port Ports



(WantEU)

6th in the world in 1994

A record 2.94 million TEU in 2018

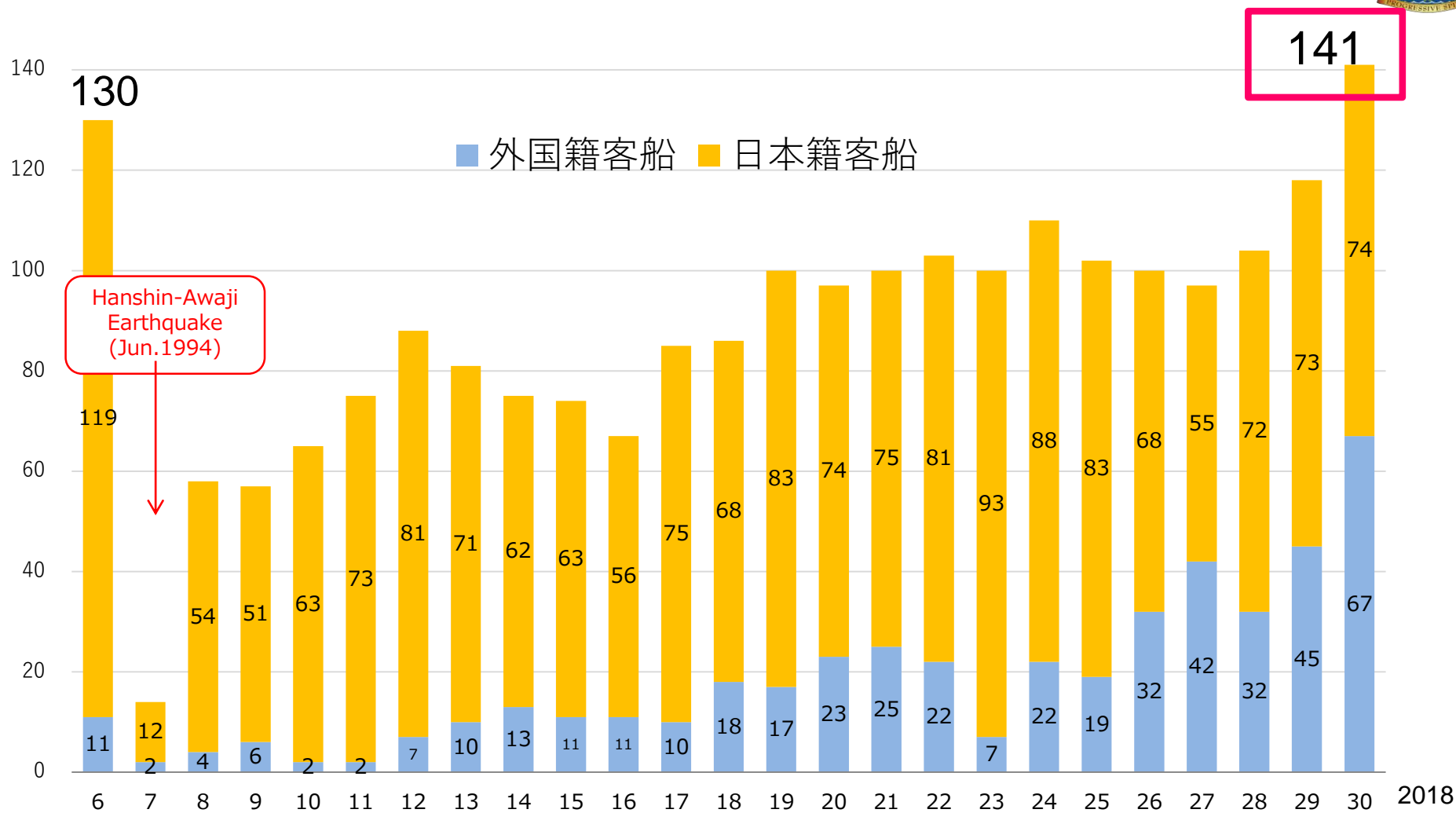


Regular container service at Kobe Port





Trends in the number of cruise passenger ships entering Kobe Port



Record high, exceeding pre-disaster levels



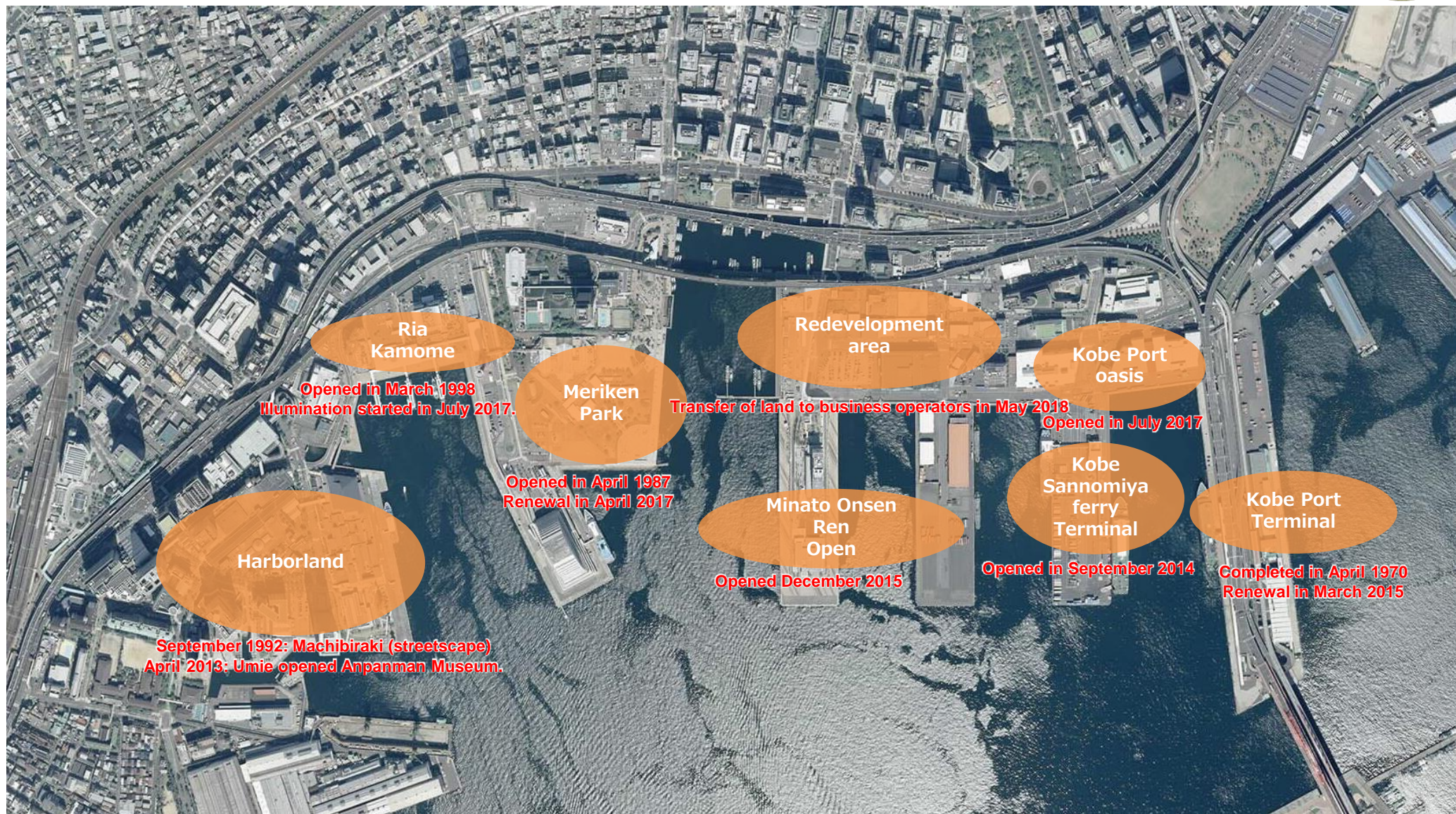
Promotion of the Cruise Ship ~Seto Inland Sea Cruise~



- Setouchi Cruise is getting well-known to for its beautiful scenary and diverse food culture.
- In Kobe port, 31 Setouchi Cruises was held in 2018.
- In cooperation with each port of Seto Area, we jointly carry out invitation activities as “Cruise Seto”.



Urban Waterfront Area Redevelopment 1



Urban Waterfront Area Redevelopment 2



Rebuilt to commemorate the 150 year anniversary of Kobe's opening (Renovated and reopened in April 2017)

Meriken Park



Formulation of the Kobe Port Future Plan



1868



**1917
(50 th)**



**1967
(100 th)**



1995



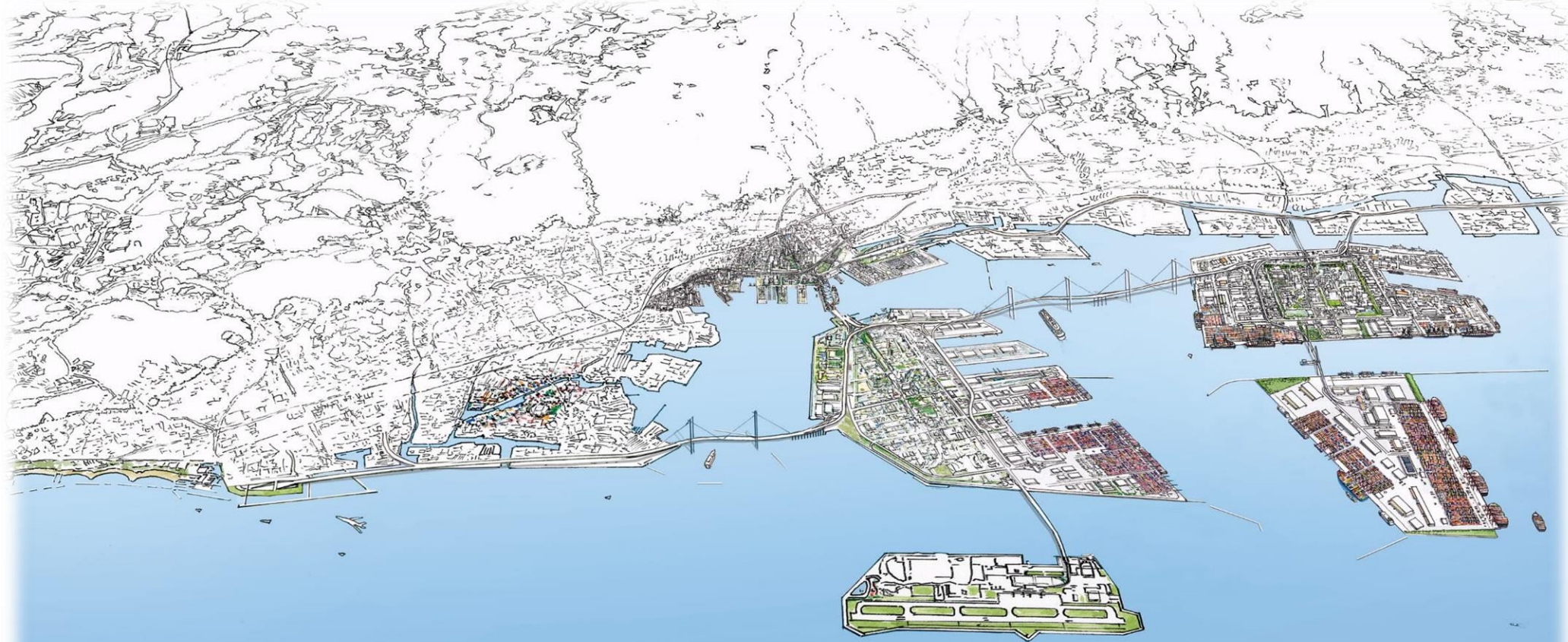
**2017
(150 th)**



2050



Future Vision for Kobe Port



Minato Kobe Continues Challenge and Evolution

~ Creating New Value ~



Major Initiatives of "Ports and harbors and industry"



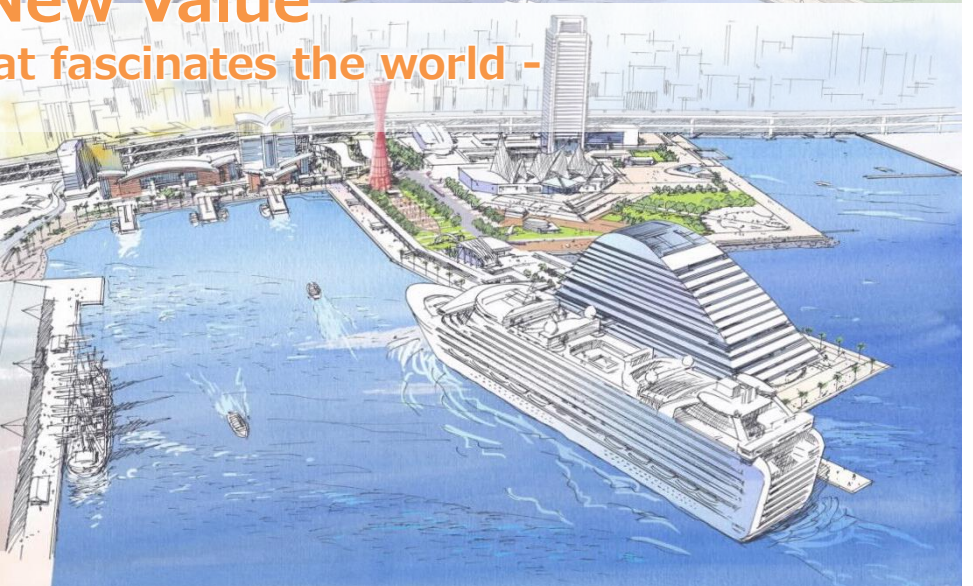
In the global Supply Chains
Ports that create new value
- Kobe International Logistics Spark Initiative -



Major Initiatives of "busy cities"



Luxury time, place, encounter,
Creating New Value
- Waterfront concept that fascinates the world -





Thank you for listening.

