

Constructing a Sustainable Smart City



★Rugby World Cup 2019
in Toyota Stadium

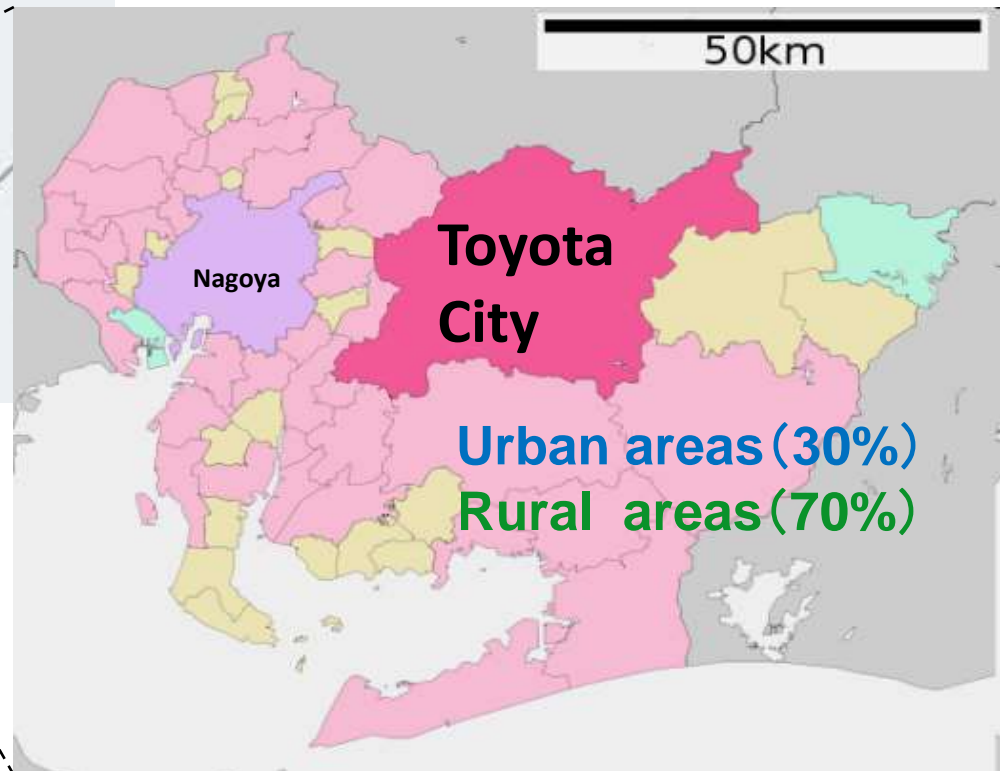
世界一熱いラグビーを届けよう。
TRY FOR ALL
RUGBY 2019 AICHI TOYOTA



11 October, 2018 City of Toyota , JAPAN

Location of Toyota City

- Area : 918 km²
- Population : 420,000
- Household : 170,000
- 70 % is forests areas



Next-Generation Vehicles



Toyota , a City Selected by the Government

Eco-Model City (2009~)

- Natural, comfortable, low-carbon life without waste
- Active development of environmental industries

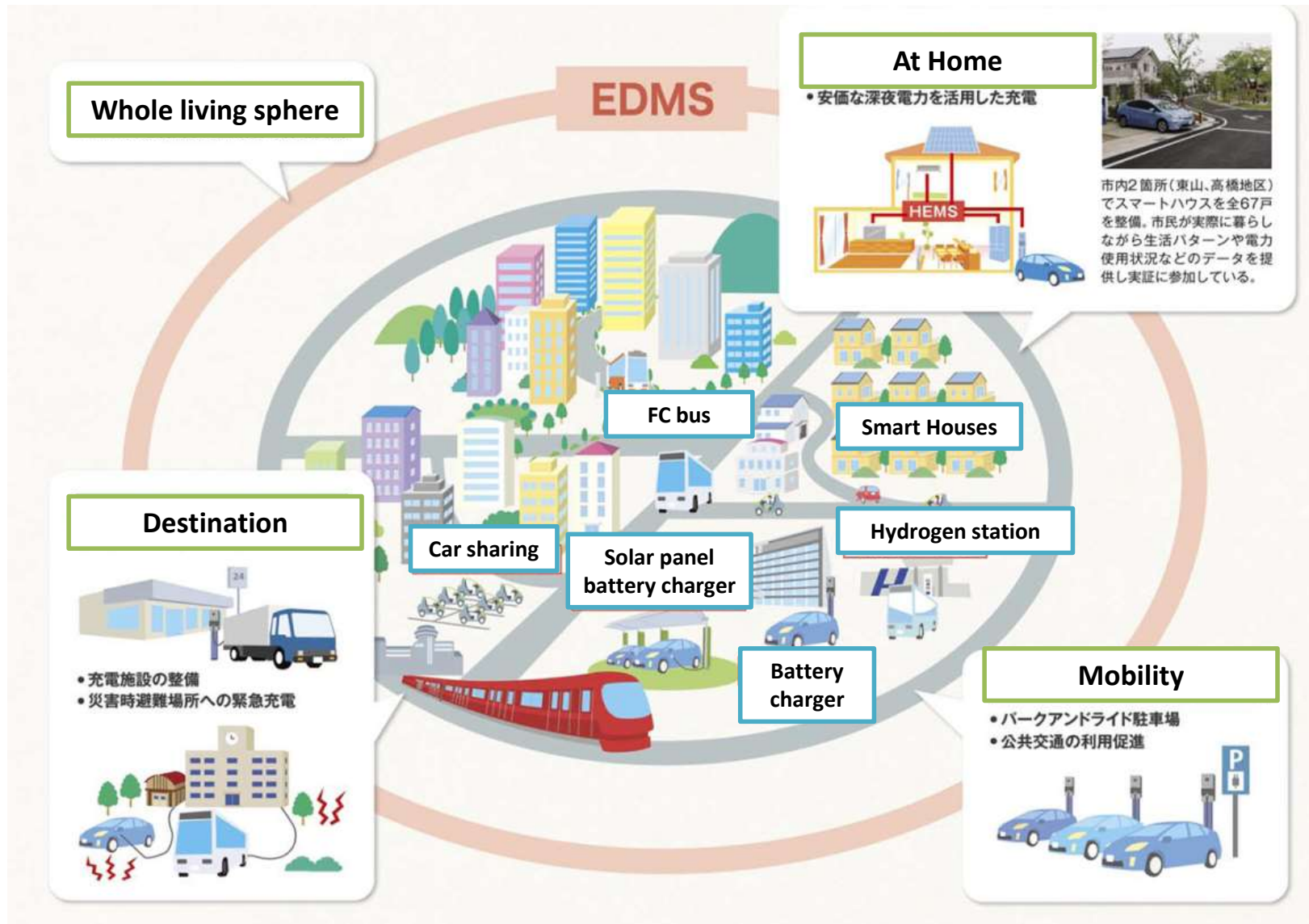
SDGs future City (2018~)

- Everybody is connected To be connected to Future Smart City

- **Covenant of Mayors**
for Climate & Energy JAPAN
- **International Urban Cooperation Project**

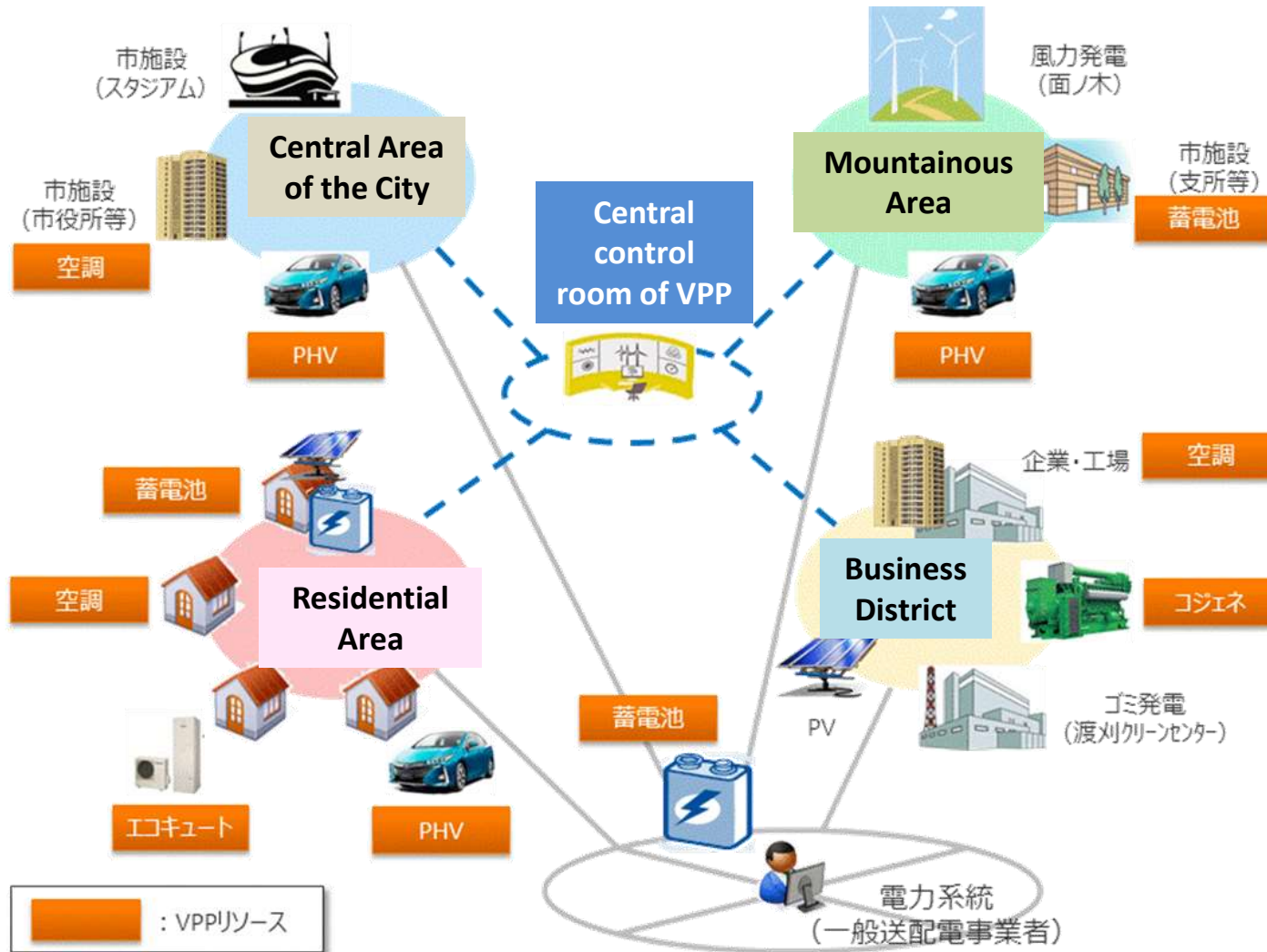


Next-generation Energy and Social Systems Demonstration (2010~2015)



Virtual Power Plant (VPP) Project (2017~)

- Contents:** Making a network of decentralized power generating units such as wind farms, incinerator plant, smart houses, PHVs, heat pump boilers, batteries, etc.



『Toyota City
“Connecting” Society
Verification Promotion
Council』

Object: Solving multiple local challenges

Project participants: 46

VPP Project Partners:

- Chubu Electric Power Company
- Denso Corporation
- Toyota Motor Corporation
- Toyota Turbine and Systems Inc.
- Toyota City

Low-Carbon Model District (2012~)



Smart House



Food Production in the Urban Area



Smart house made of local wood



Experience of personally mobility



FCV



Hydrogen Station



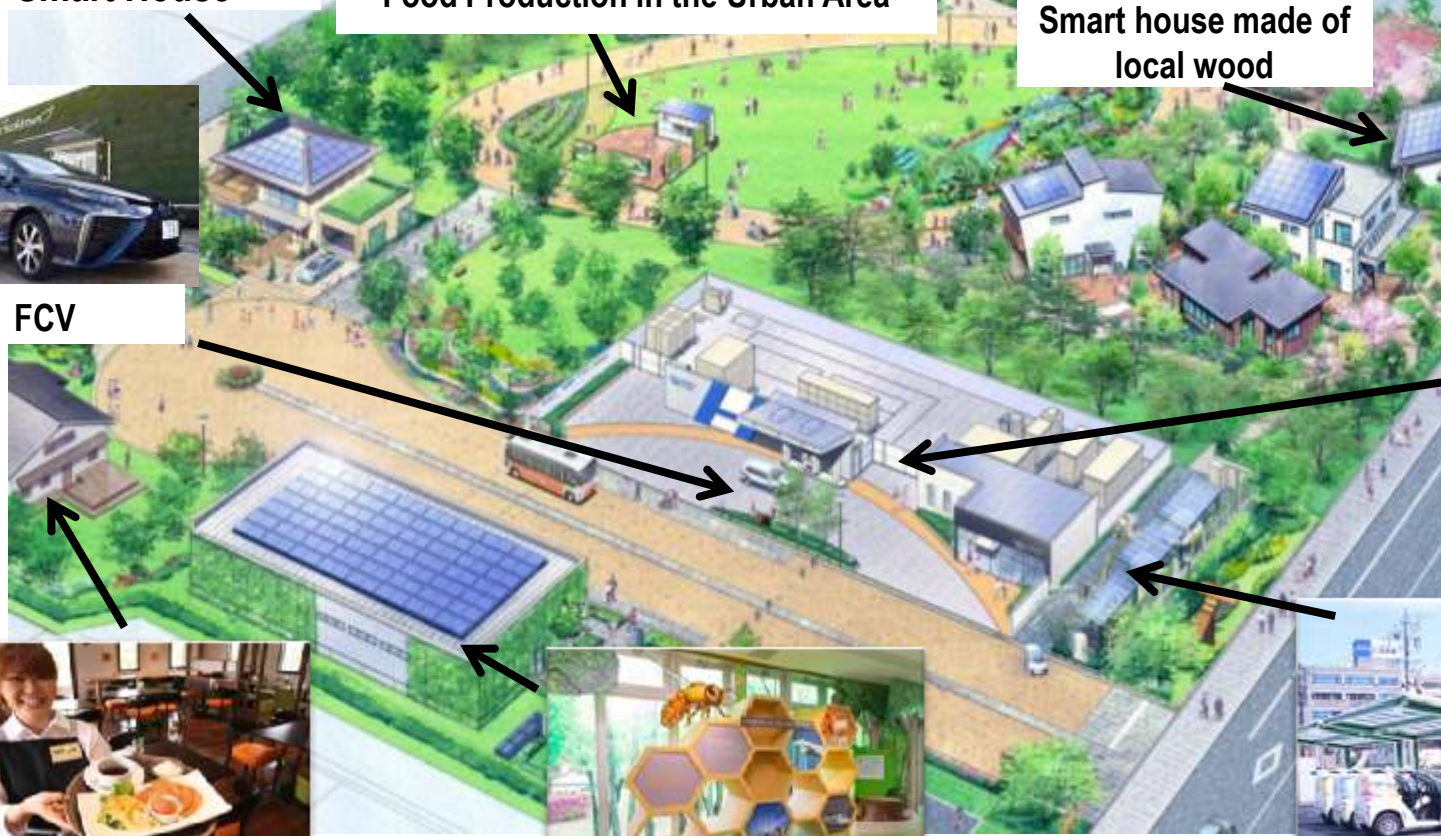
Farm-to-table restaurants



A object in pavilion



Smart Mobility Park



Grenoble-Alpes Metropole and City of Toyota for “Smart Cities”



11 October, 2018 Grenoble-Alpes Metropole and City of Toyota

Study Tour Grenoble-Alpes Metropole

from 3 October to 5 October , 2018



Study Tour Grenoble-Alpes Metropole

from 3 October to 5 October , 2018



Study Tour Grenoble-Alpes Metropole

from 3 October to 5 October , 2018

