

International Urban Cooperation

Fostering Sustainable Urban Development on a global scale

Sub-plenary:

*Multi-level dialogues -how to secure climate ambition
and speed-up implementation*

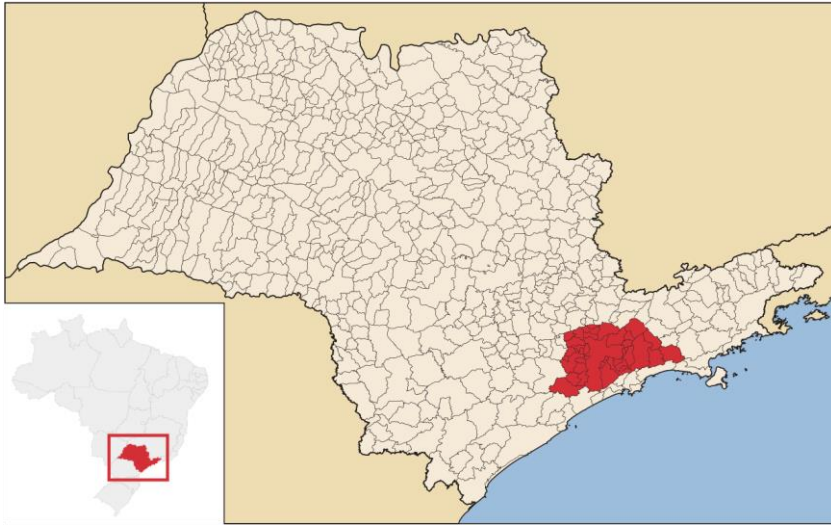
Mobility as a focus to faced the climate change

Marcos CARDOSO, Specialist in Transport, Consórcio Intermunicipal Grande
ABC Brazil



Introduction

Greater ABC Region - Formed by seven municipalities with a population of more than 2.8 million people, conurbated territory, an economy strongly related to industries. With 2.0 million motor vehicles



Challenge

2013- Regional Mobility Plan

- Disruption between Municipal Networks
- Superposition of the Locals and Metropolitan Public Transportation Networks
- Institutional Integration
- Technological Integration
- Mobility and Climate Change Relation

2016- CIGABC signs the Global Pact of Mayors and prepares the 1st Regional Inventory of Greenhouse Gas emissions.

- It was identified that 60% of the CO₂ released into the atmosphere per year in ABC comes from the Transport sector.



Solution

With actions to reorganize mobility in the region, we can reduce the emission of fossil fuel gases.

Redução da emissão de ônibus com aumento da velocidade, Londres

Medida adotada	Redução (%)
Via exclusiva	60
Faixa no contrafluxo	35
Faixa exclusiva no pico	20
Semáforo para liberar passagem	12
Conversões com prioridade	7

Fonte: Guillian et al., 2004

Redução das emissões com a regulagem adequada de semáforo

Veículo	Emissão/hora ¹ (kg)		
	Antes	Depois	Ganho
Autos	199,9	146,6	53,3
Motos	79,8	58,5	21,3
Caminhões	4,0	3,0	1,1
Total	283,7	208,1	75,7 (27%)
Kg/dia ²			605,2
Ton/ano ³			151

1. CO, Nox e VOC (compostos orgânicos voláteis), emissões totais dos veículos por hora: autos (250 g), motos (456 g) e caminhões (161,5 g).

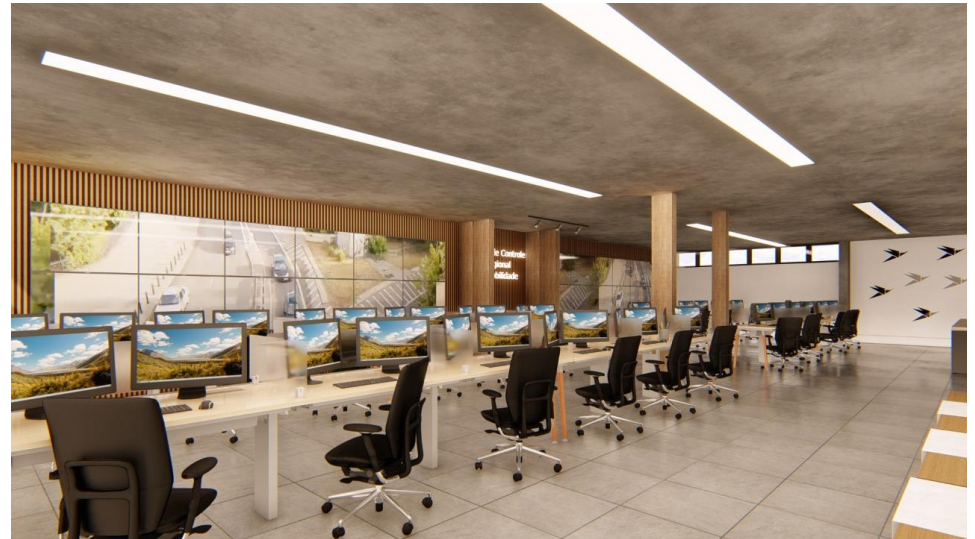


Solution

Understanding that mobility should be planned on a regional and not just a municipal scale due to the conurbation of the municipalities of the Greater ABC, where 850.000 citizens of the region travel daily outside their city, to study and / or work.

Actions:

- Executive design of regional bus corridors
- Executive design of the Regional Mobility Control Center (CCRM), for operation, inspection and transportation planning



Solution

Result of the IUC Cooperation Program – Greater ABC and Turin:

- Experience of Integration of Transport Modes
 - Tariff Integration Study of Transportation Modes of the Grande ABC Region
 - Ticket Technology Integration Project
- Experience of Strengthening of Governance and Improvement of Management Structures



Lessons learned

- In Brazil, Climate Change Policy is still poorly developed in local governments -
How to bring national targets to the local and regional scale?
- Paradigm and culture change needed to understand local and regional actions to
faced the climate change.
- It is necessary to identify and understand the differences of the territories in the
implementation of programs.
- Difficulty keeping track of goals
- It is necessary to align technology with public policies to combat climate change
- Expansion of technical knowledge with the Cooperation Program
- Importance of regional arrangements.

