

International Urban Cooperation

Fostering Sustainable Urban Development on a global scale

Sub-plenary:

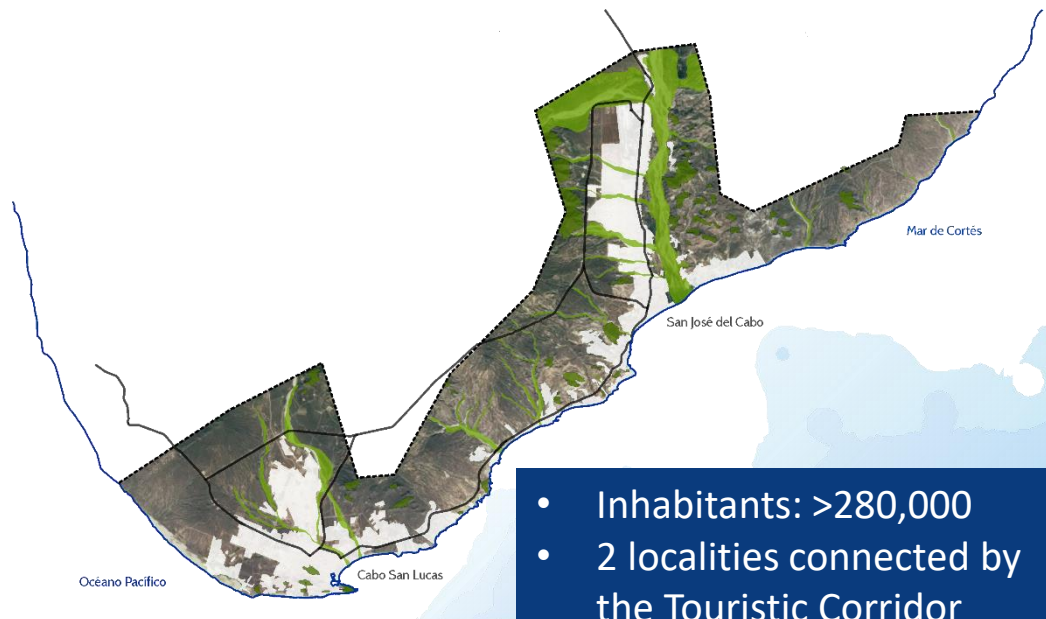
Integrating climate action - the nexus of resilient biodiversity, adaptation and mitigation

Open Public Space System in Los Cabos

Ulises Perales, Deputy Director of Management, Los Cabos Planning Institute



LOS CABOS, MEXICO



- Inhabitants: >280,000
- 2 localities connected by the Touristic Corridor
- Beachfront: 192 Km

CHALLENGES FACED

LACK OF PUBLIC SPACE

- ~3 m² of Green Area/inh
- No buffer or protection areas inside the urban spot

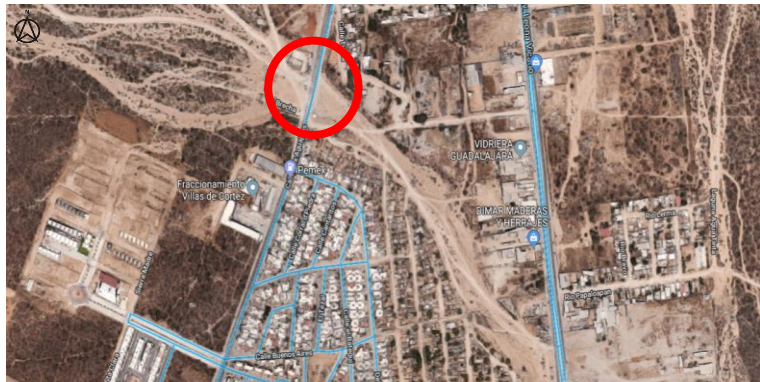


RAPID URBAN GROWTH

- Urban area growth ~20% (2010 - 2015)



CHALLENGES FACED



CHALLENGES FACED



Canal calle Auditorio Leonardo Gastelum



Cauce colindante a la Av. Reforma



Canal Blvd. Leona Vicario



Calle sin nombre, lateral del Blvd. Constituyentes

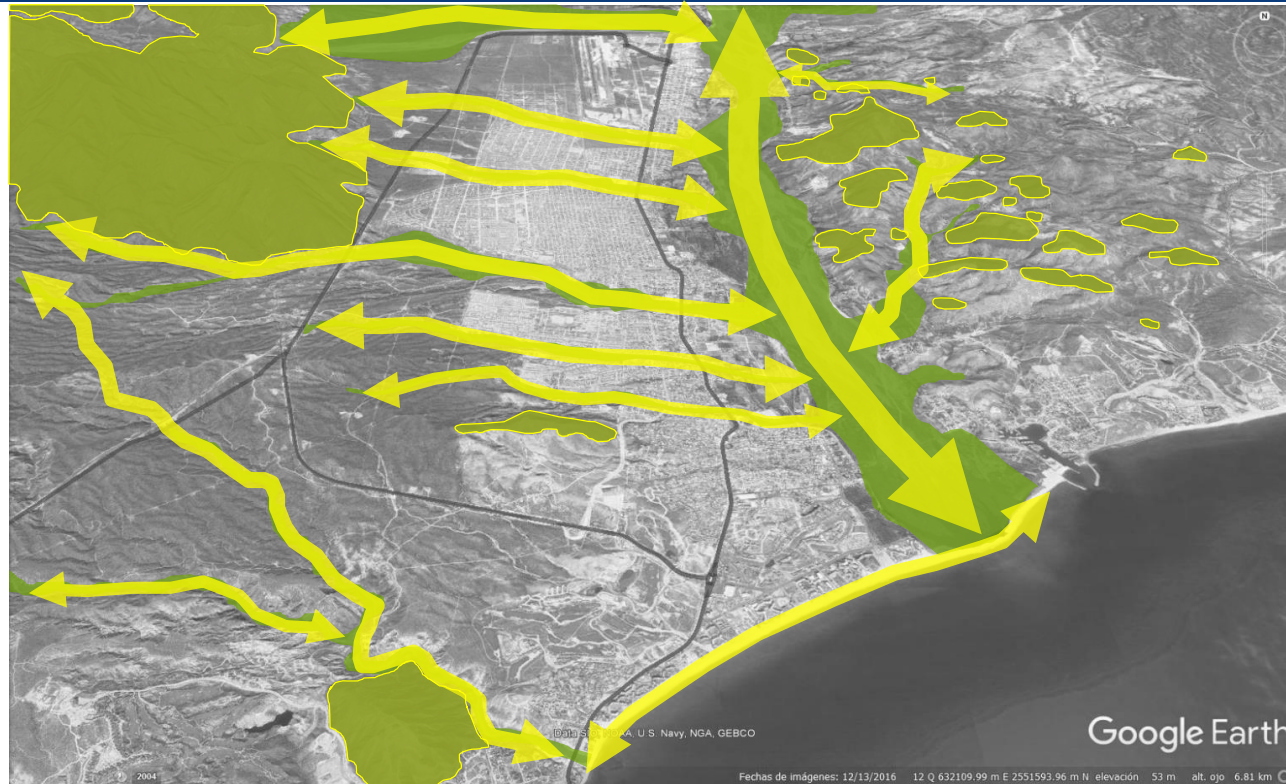


Parque Yenekamu



Calle Camino Viejo a San José e intersección arroyo Salto Seco

OPEN PUBLIC SPACE SYSTEM



- Integrate urban structure
- Integrate hills, creeks and beaches in a network of lineal parks
- Minimum interventions, respecting the natural cycle of the ecosystems

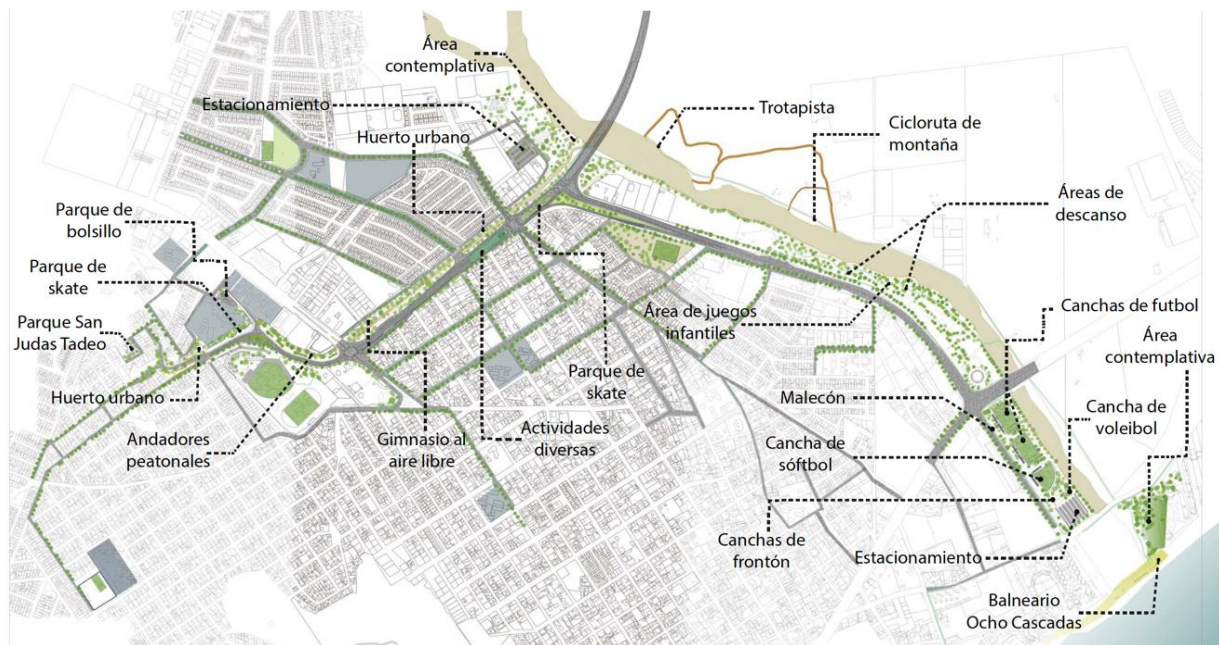
OPEN PUBLIC SPACE SYSTEM



- Integrate urban structure
- Using hills, creeks and beaches in a network of lineal parks
- Minimum interventions, respecting the natural cycles

GREEN INFRASTRUCTURE

PROYECTO PLAN MAESTRO PIC

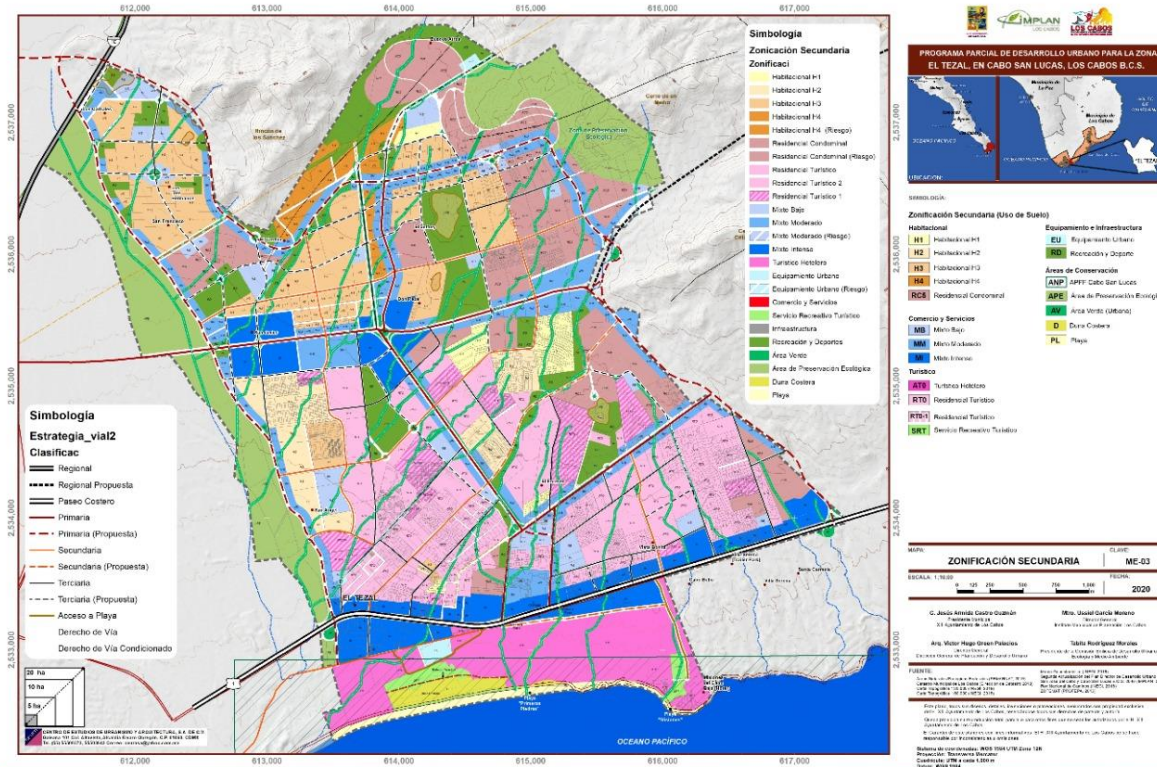




Conceptual Preliminar



ZONING AND LAND USE PLANNING





NOTES FOR AFTERNOON SESSIONS

Overall question applicable for all afternoon sessions:

- *What plans do participating cities and regions have to reach the targets of the Paris Agreement?*

Specific guiding questions for each afternoon sub-plenary:

- *What are the most difficult challenges related to inter-level and inter-departmental cooperation?*
- *How do participants approach the challenges of energy transition and just transition?*
- *Where are the overlaps (e.g. synergies, co-benefits, trade-offs, etc.) between biodiversity, adaptation and mitigation, and how to break silos to ensure all three streams are addressed?*

