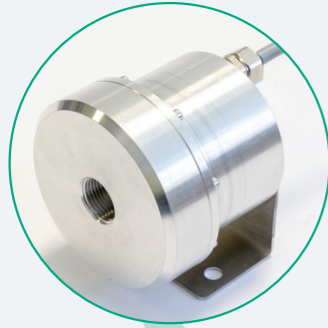




ENERGY HARVESTING SOLUTION FOR SMART GAS GRIDS



HAZARDOUS AREA

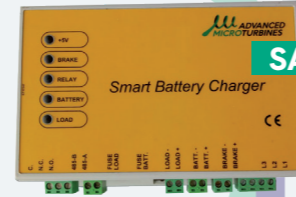


The **MICROTURBINA** recovers energy from a pressure drop in the gas network.



POWER

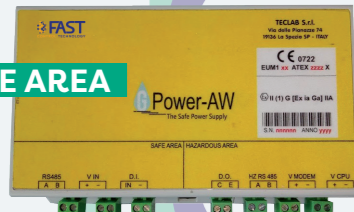
The **SMART BATTERY CHARGER** adapts the energy for battery charging and transmits data to the Microturbine.



SAFE AREA

POWER DATA

SAFE AREA



The **GPOWER-AW** distributes electricity in safe mode (ATEX) to the RTU GLog - AW and to the HLCM - AW unit.



DATA POWER

The **GLOG-AW (RTU)** acquires all the data on the system status and the Microturbine and transmits them to the Modem (HLCM - AW).

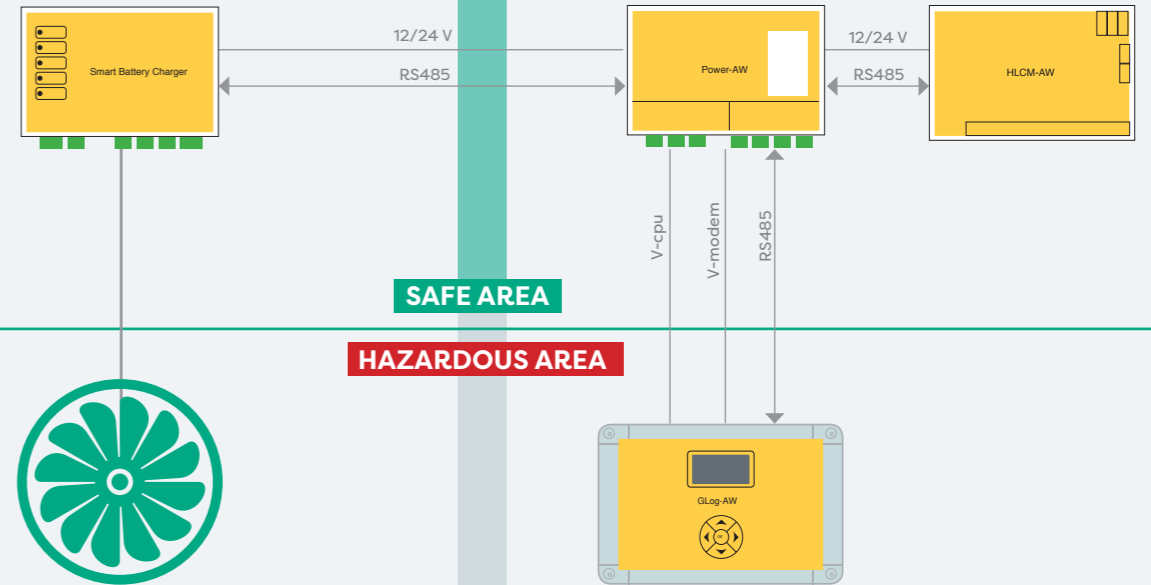


HAZARDOUS AREA

DATA

The **HLCM-AW** receives data from the RTU, transmits them via GPRS / F.O. / WiFi and integrates with local third-party devices.

SAFE AREA



AIRWATT - TECHNICAL SPECIFICATIONS

MICROTURBINA AND SMART BATTERY CHARGER

- VOLTAGE:** 12 V o 24 V
- POWER:** Fino a 30 W @ 2 barg
- CONNECTIVITY:** Modbus - RS485
- CERTIFICATIONS:** ⚠️ ATEX (II 2G Ex mb c IIC Tx X Gb) - Microturbina
 CE EMC, FCC, IC - Smart Battery Charger

GPOWER-AW

- VOLTAGE:** 12 V o 24 V
- CONNECTIVITY:** Modbus - RS485
- CERTIFICATIONS:** ⚠️ ATEX (II (1) G [Ex ia Ga] IIA)
 CE EMC

GLOG-AW

- VOLTAGE:** 12 V
- INPUTS:** 10 DI, 3 AI
- OUTPUTS:** 4 DO (optional)
- CONNECTIVITY:** LTE, GPRS, GSM, 3G, WM BUS, LoRaWAN, WiFi, Bluetooth
- CERTIFICATIONS:** ⚠️ ATEX (II 2G Ex Ib IIA T3 Tamb = -25°C ÷ +60 °C)
 CE EMC
 (many other configurations available)

HLCM-AW

- VOLTAGE:** 12 V
- INPUTS:** 3 DI, 8 AI
- OUTPUTS:** 2 DO
- CONNECTIVITY:** Ethernet, USB, RS485, RS232, WiFi
- CERTIFICATIONS:** CE EMC





ADVANCED MICROTURBINES SRL

Genova - ITALY
www.microturbines.it
info@microturbines.it



FAST SPA

Scandiano (RE) - ITALY
www.fastonline.it
info@fastonline.it



This project has received funding from
the European Union's Horizon 2020 research
and innovation programme under grant
agreement n.732493