



JUNE 2020

WWW.IUC.EU

PANAJI BUILDS ON GLOBAL PARTNERSHIPS TO SUPPORT CLIMATE ACTION

Throughout its long history of taking climate action, the Corporation of the City of Panaji (CCP) has continually cooperated with global community of experts and likeminded local governments for support, knowledge, and to learn about new solutions that can be successfully adapted to their local context.



EXECUTIVE SUMMARY

The City of Panaji has focused on international cooperation as a path to low-carbon and sustainable urban development. They have worked as part of a diversity of bi- and multi-lateral international partnerships, including as a signatory to the Global Covenant of Mayors for Climate and Energy (GCoM), as well as in a bilateral IUC city-to-city pairing with Dubrovnik (Croatia).

Panaji joined the GCoM in October 2015, and have since expanded the number and types of international climate initiatives in which they are engaged. The city pairs its global engagement with consistent local participation at every stage of its climate action journey. Taken together,

this two pronged approach in which the city is both outward and inward looking has resulted in success with respect to climate change mitigation, adaptation, and increasing local climate resilience.

This case study is dedicated to the memory of Clive Paiva who worked relentlessly and enthusiastically to build the cooperation between Panaji and Dubrovnik and to make the City of Panaji a better place to live.



CHALLENGES AND SOLUTIONS

For many years, Panaji has been committed to climate action. However, the city has faced two major challenges in this journey. First is a lack of access to advanced technical expertise needed to innovate measures to address climate change. And, second, is a lack of funds to implement climate change adaptation and mitigation actions at a large scale.

To face these obstacles, Panaji has for many years turned to a community of global partners that share its vision of a sustainable, low-carbon future. The CCP works continuously to seek support from international peers. The GCoM provides one platform through which the city can speak with global experts and like-minded governments to learn about international best practice solutions, tools and mechanisms to bring tangible improvements to its own city when adapted to its own context. However, it is by no means the only way that Panaji is tapping global expertise. The city has worked as part of a number of European Union initiatives, and with The Climate Group, The Energy and Resources Institute, German Development Agency, ICLEI – Local Governments for Sustainability, and World Resources Institute, among others, as part of global programmes that work towards sustainable urban development.

Panaji has utilised international collaboration to push forward local sustainable urban development. To be successful, however, the city understands the need to also look to local expertise. Panaji works extensively with local communities on awareness raising regarding climate change. They are also committed to ensuring local participation at every state of the city's climate journey, in order to ensure success. This has empowered residents to act to mitigate climate change.



Worldwide, cities are facing acute pressure with regards to exponential rates of urbanisation and depleting resources. This is the time when cities jointly have to come forward and raise the bar for their ambitions and actions on sustainable development. As a GCoM member, we aspire to raise cumulative commitments to climate change, as well as seek support from this global platform in jointly addressing the problem of climate change and challenge of urbanisation.

Sanjit Rodrigues

Commissioner

Corporation of the City of Panaji





RESULTS AND IMPACT



The CCP works across municipal areas to ensure that diverse fields are made more sustainable. This includes improving the sustainability of local water supply, street lighting, wastewater management, energy consumption in buildings, solid waste management, and more.

Energy conservation has been an area of particular focus. Incentivising the use of sustainable energy sources, energy saving measures to target demand-side management, and adopting innovative financing tools to support this work, are all among the measures that have been adopted as part of Panaji's climate plans.

The city's climate change mitigation and adaptation work extends beyond water, waste and energy. Through the IUC programme, the City of Panaji is working with Dubrovnik to scope smart parking solutions and innovative activities to bolster citizens' climate change awareness. For Panaji, this has led to a new understanding of ways to work with the private sector to implement Smart City solutions, and has introduced the city to a slate of new financing mechanisms that can be used to support sustainable urban growth. The two cities are committed to continuing to work towards the further development of their partnership.

Panaji is a coastal city with an annual monsoon season featuring heavy rainfall and gusting winds. This impacts its climate change vulnerabilities and risk factors. The city has prepared a detailed vulnerability assessment, and has ascertained and quantified – through extensive consultation with local stakeholders – the risk factors associated with various local services. This has led Panaji to adopt a variety of measures that address and reduce risks across fields such as water supply, storm water drainage, and solid waste management.

Reporting climate data has been crucial to Panaji's success. This is particularly important because the city is rapidly growing. Reporting allows Panaji to plan climate action in advance – taking into consideration anticipated growth – and to measure the progress of already implemented actions. And, above all, by reporting through a unified global platform like the GCoM, Panaji is able to compare its performance to that of its global peers, and adjust its ambitious targets accordingly. The City of Panaji is also working closely with the IUC-India office to conduct an in-depth revision of the city's GHG inventory. All of this work in reporting has led to direct results – Panaji has repeatedly broken its own records on climate action.



LESSONS LEARNED



Finding synergies with different state government agencies, the private sector, industry, and business entities is highly important.



Local people's participation along the entire journey of climate action is crucial to ensure that plans are a success.



Climate action cannot be done in "silos"; various national and state level programmes must work together for cohesive action that ensures that initiatives bolster one another.



Partnerships and alliances with global champions is a critical tool, both for the exchange of technological solutions, and to devise innovative funding mechanisms that support climate action.



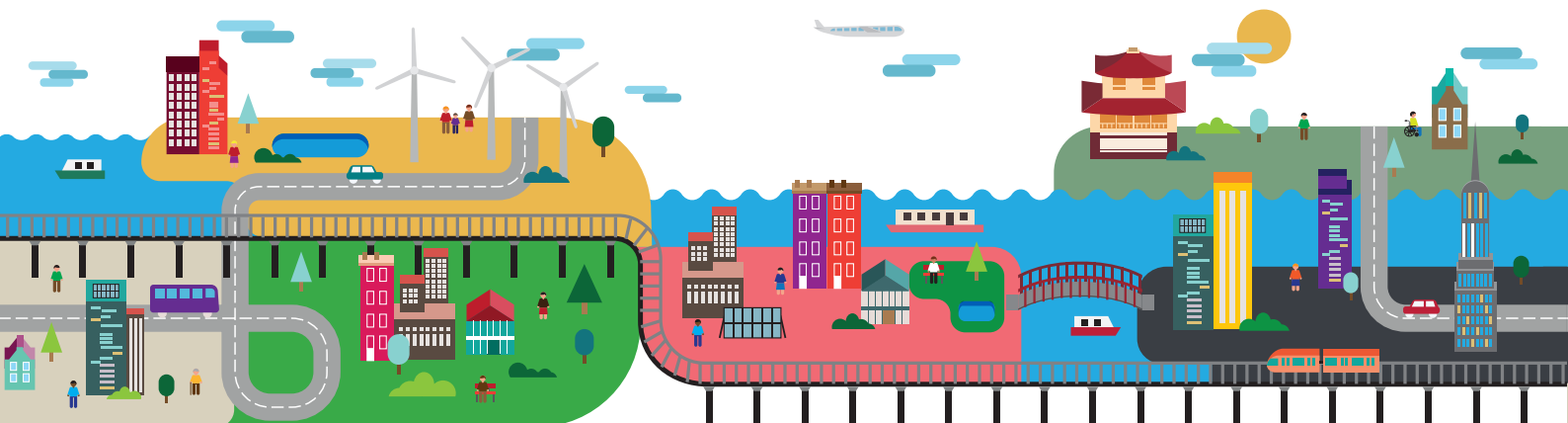
THE IUC PROGRAMME

The International Urban Cooperation (IUC) programme enables cities in different global regions to link up and share solutions to common problems. It is part of a long-term strategy by the European Union to foster sustainable urban development in cooperation with the public and private sectors, as well as representatives of research and innovation, community groups and citizens. Through engaging in the IUC, cities will have the chance to share and exchange knowledge with their international counterparts, building a greener, more prosperous future. The IUC programme is an opportunity for local governments to learn from each other, set ambitious targets, forge lasting partnerships, test new solutions, and boost their city's international profile. Its activities will support the achievement of policy objectives as well as major international agreements on urban development and climate change, such as the EU Urban Agenda, the UN Sustainable Development Goals, and the Paris Agreement.

THE GLOBAL COVENANT OF MAYORS FOR CLIMATE & ENERGY

The Global Covenant of Mayors for Climate & Energy (GCoM) is an international alliance of local governments with a shared vision of a world where urban leaders and their partners accelerate ambitious, measurable climate and energy initiatives that lead to a just, low-emission and climate resilient future. The GCoM enables cities, local governments, and the networks that support them to move from ambition to action. It elevates climate leadership and facilitates partnerships at the crossroads of research, data, finance, and communications. The GCoM emphasises climate change mitigation, adaptation, and access to clean and affordable energy.

The GCoM supports locally-relevant solutions in sectors where cities can have the greatest impact. GCoM cities register, implement, and monitor their strategic action plans and make information on their efforts publicly available.



Authors:
Corporation of the City of Panaji,
and IUC-India

For more information, contact:
Ashish Verma, Sustainable Development
Expert, IUC India
✉ averma@iuc-india.eu