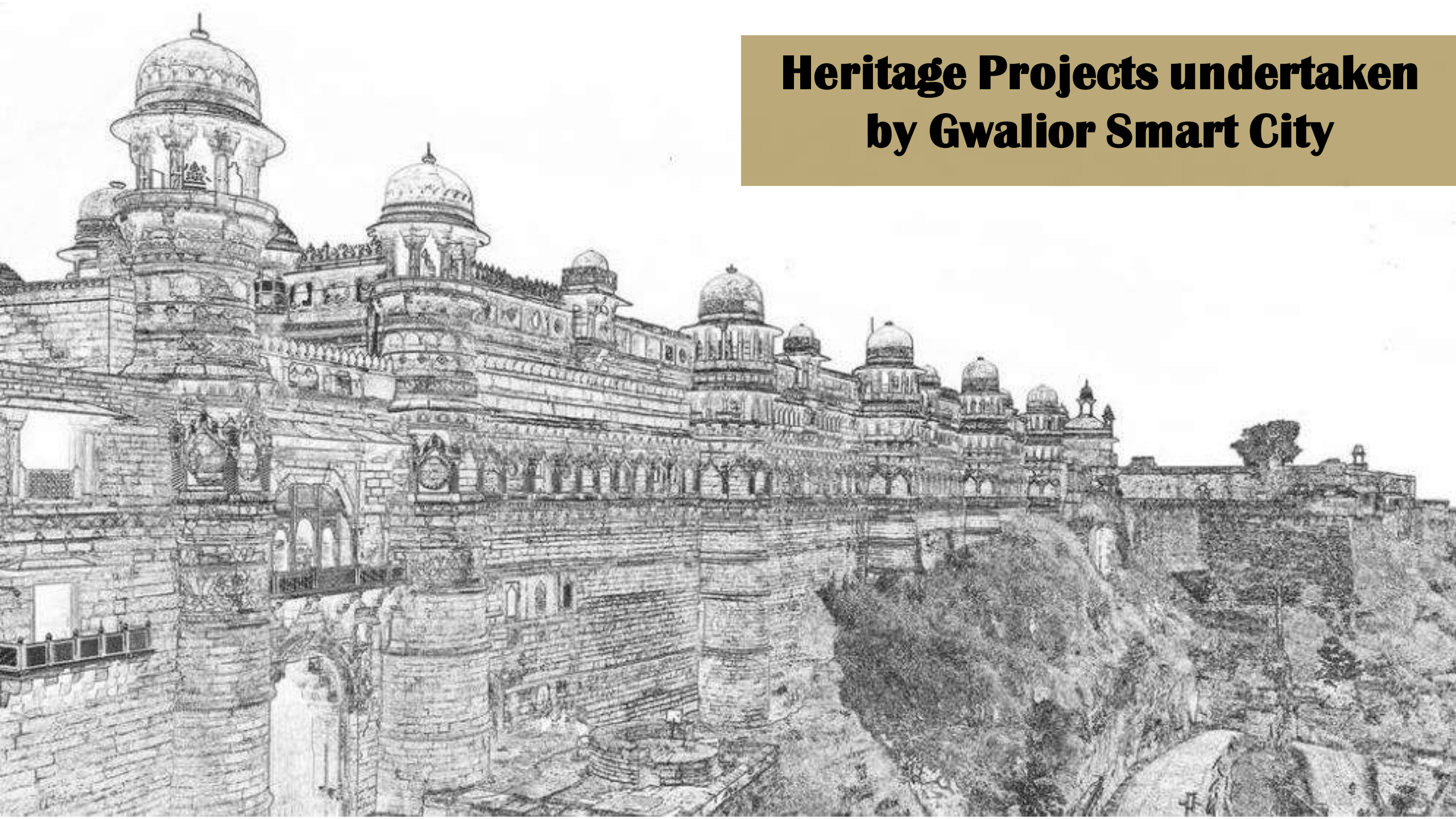


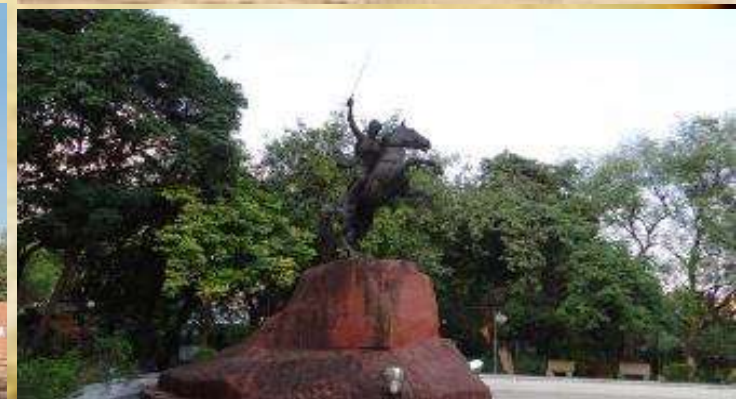
# **Heritage Projects undertaken by Gwalior Smart City**





# Gwalior – A living Heritage of Heroes

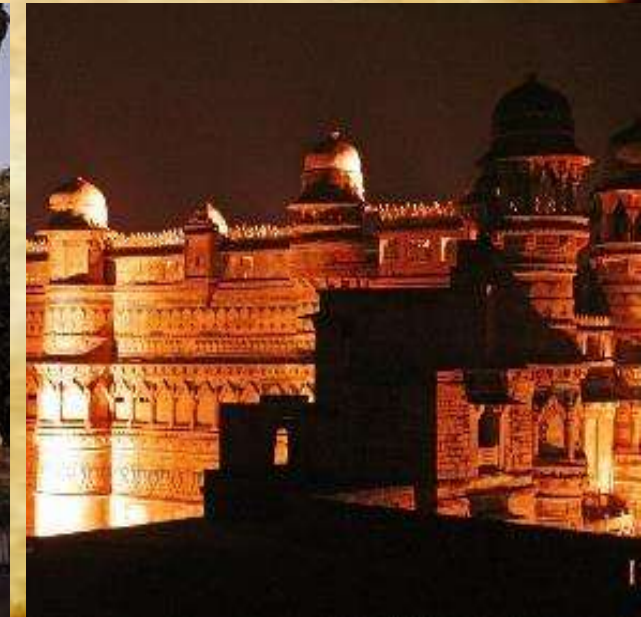
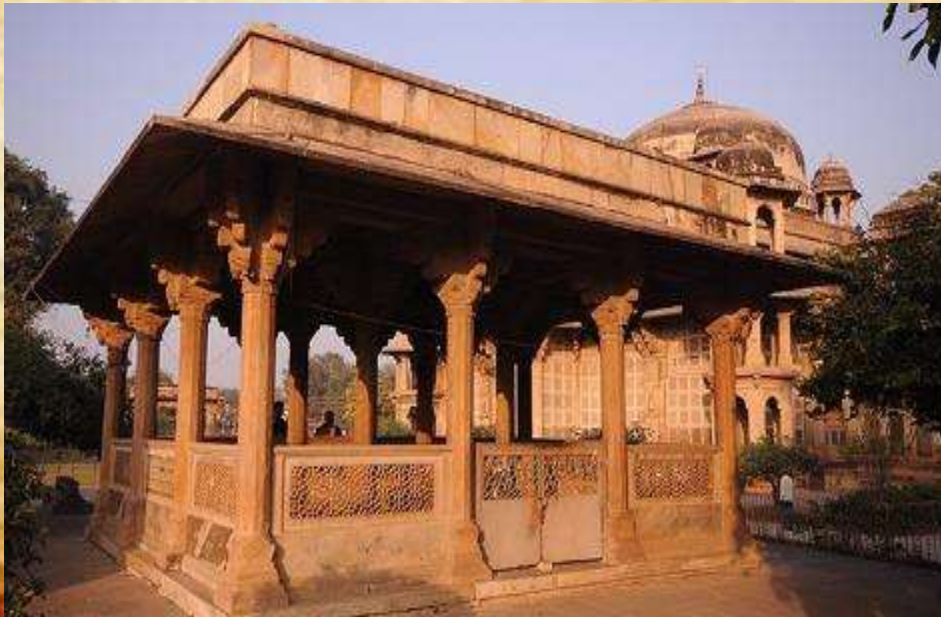
- Gwalior is best known for its imposing hilltop fort, famously known as **'The Pearl Amongst Fortresses In India'**.
- Historically, the city has been the cradle of a number of dynasties that shaped the rich culture. The most famous being the **Tomars & Scindias**.
- Their influence is clearly seen in the many regal structures that dominate the cityscape.
- Gwalior is also known for the 1857 rebellion and is the **final resting grounds of Maharani Laxmi Bai**.
- **The Vishnu Temple At Gwalior Fort Has The First Ever Written Zero**





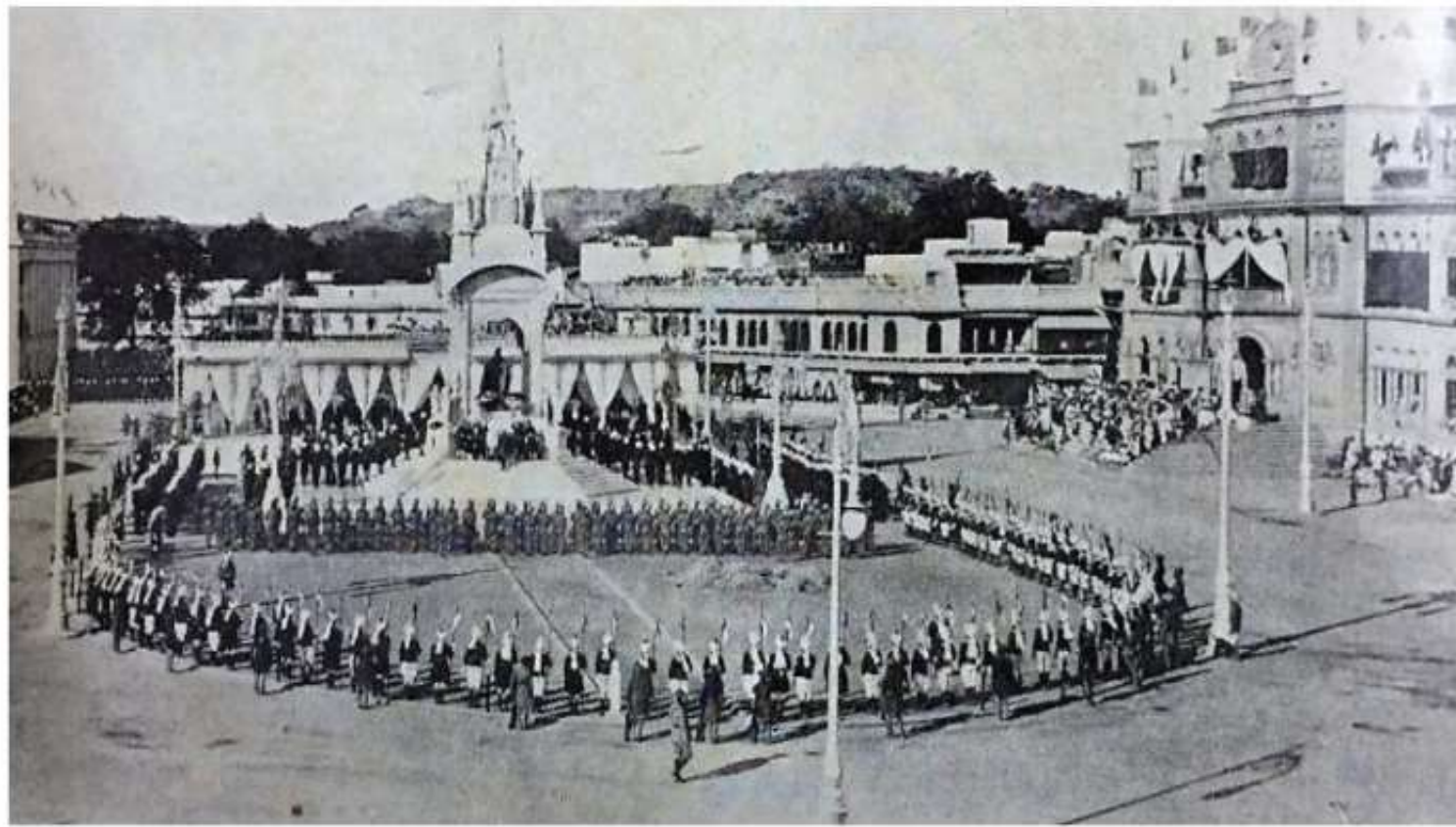
# Gwalior – A living Heritage of Heroes

- Holds an unparalleled reputation and has retained Indian traditions and the wealth of classical music intact over the years.
- Gwalior Gharana is one of the oldest Khayal Gharanas. Legendary musicians like **Tansen and Baiju Bawara belonged to Gwalior.**
- **Tansen Music Festival** organized by the MP State Govt. in collaboration with the Dept. of Culture provides a platform to the artists and musicians to showcase their talents.
- Gwalior also has a rich history in sports, with the **wizard of Hockey, Dhyan Chand**, belonging to the city.





# Heritage Conservation Works as part of Smart City Mission



- Capital investment worth **INR 250 Crores** focused towards Heritage Sector; major investment reserved for projects surrounding Maharaj Bada.
- **4<sup>th</sup> Largest investment** in Heritage amongst 100 smart cities
- **2<sup>nd</sup> city to have Pan-city** Heritage Projects after Nashik



# Why Adaptive Reuse?

- It offers a chance to encapsulate the past design ideas while moving forward with modern day ideas.
- It serves as a conduit between the established and the experimental.
- It brings up a dialogue between the age-old design methods and current ideas in science, philosophy, architecture and technology.



**P.R.R.A**

## Preservation

Maintaining the fabric of a place to its existing state & retarding deterioration

## Restoration

Returning the existing fabric to a known earlier state by removing accretions

## Reconstruction

Returning a place to a known earlier state by introduction to a new material

## Adaptative Reuse

Modifying a place to suit use



# Common Issues

- Damaged flooring and delaminated roofing *pattis* due to excess water ingress from the roof
- Damaged stone masonry wall due to loading failure and sub-base subsistence
- Cracking and sagging of lime terracing at first floor causing water seepage to lower floors
- Cracks in stone patti roofing systems now supported by steel girders
- Multiple layers of lime wash hiding the original designs and carvings on arches and brackets





# Process adopted to overcome issues

- A Heritage conservation expert was onboarded to analyze the situation and advise an efficient plan
- Structural strengthening of the Heritage Complex
- Sand Blasting was used to remove excess deposit of Lime on the original stonework
- New Plastering of the walls was done using traditional Lime Surkhi using Jaggery, Pulses, Jute
- Handmade Heritage Tiles are used for flooring which retain and enhance shining upon usage







# Proposed Interventions

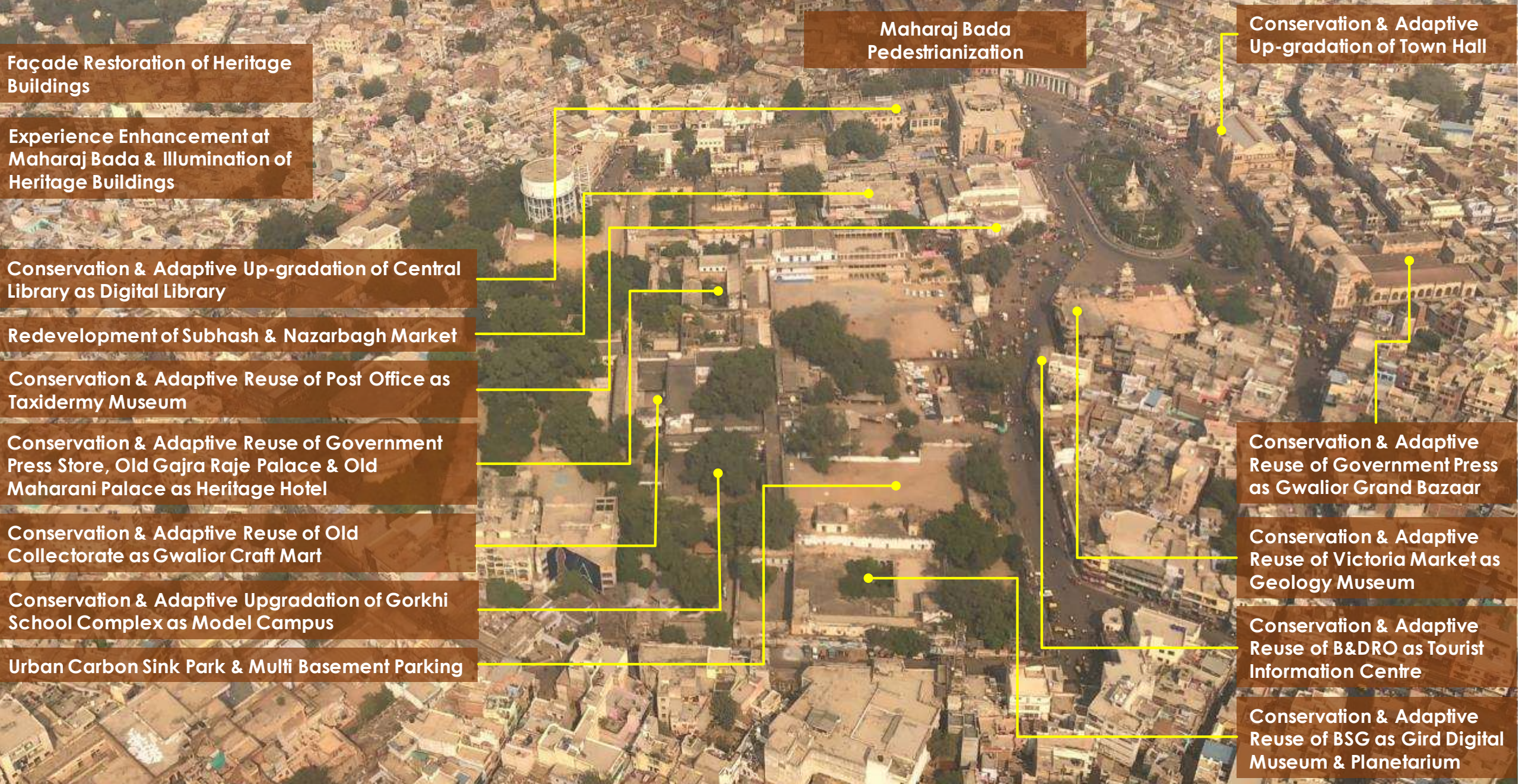


## Significance of the Area

- Built in early 20<sup>th</sup> century by Scindias. Objective - bring diverse European architectural styles in a single location – one of its kind in India
- Historic precinct, 50 Acres, 10 heritage public buildings, 3 organised markets and large informal retail zone
- Core commercial hub of the oldest quarter of Gwalior city
- Scope - redevelopment and rejuvenation to create a modern space with heritage as focus







**Façade Restoration of Heritage Buildings**

**Experience Enhancement at Maharaj Bada & Illumination of Heritage Buildings**

**Conservation & Adaptive Up-gradation of Central Library as Digital Library**

**Redevelopment of Subhash & Nazarbagh Market**

**Conservation & Adaptive Reuse of Post Office as Taxidermy Museum**

**Conservation & Adaptive Reuse of Government Press Store, Old Gajra Raje Palace & Old Maharani Palace as Heritage Hotel**

**Conservation & Adaptive Reuse of Old Collectorate as Gwalior Craft Mart**

**Conservation & Adaptive Upgradation of Gorkhi School Complex as Model Campus**

**Urban Carbon Sink Park & Multi Basement Parking**

**Maharaj Bada Pedestrianization**

**Conservation & Adaptive Up-gradation of Town Hall**

**Conservation & Adaptive Reuse of Government Press as Gwalior Grand Bazaar**

**Conservation & Adaptive Reuse of Victoria Market as Geology Museum**

**Conservation & Adaptive Reuse of B&DRO as Tourist Information Centre**

**Conservation & Adaptive Reuse of BSG as Gird Digital Museum & Planetarium**

# Maharaj Bada Heritage & Cultural Quarter Revitalization



# Conservation & Adaptive Reuse of Bharat Scout Guide as Digital Museum & Planetarium



## Project Features

- Comprehensive **conservation of the heritage structure**
- Provision for visitor reception and facilities and education about digital/virtual museum
- Provision for 4 sections of the cultural heritage museum such as: **Art & Architectural Heritage; Culinary & Food Habits; Way of Life;** and **Cultural Traditions**, complete with all digital galleries, signage, display units, interactive media kiosks, etc.
- Construction and development of a **mini-Planetarium** with a seating capacity of 35 people complete in domed roof, sky projectors, seating, automation, etc.
- Provision for reuse of the central courtyard as a live digital theatre complete with all systems and installations

**Cost:** INR 7.25 Cr.

**Progress:** BSG building restored and reused as Museum. Planetarium is currently being constructed.



## Site conditions before upgradation





# On Site execution





# On Site execution





## After Conservation





## After Conservation





After Conservation





# Digital Museum & Planetarium (Virtual Tour)



[Virtual Tour](#)



# Façade Restoration of Heritage Buildings



## Objectives

The Façade Improvement program aims to conserve and showcase the external facades of landmark heritage building structures of Maharaj Bada & Gwalior.

- Build a sense of pride and belonging among the local community.
- Contribute to the quality of life of residents, workers and visitors
- Improve the marketability of the local business area.

## Project Features

- Initiate the much-needed built-heritage **conservation & restoration works** for public buildings in the historic urban square & Gwalior
- **Structural strengthening** of the building to prolong the life of the building
- Façade improvements would make the buildings **friendly and accessible** to the pedestrians by making the necessary design adjustments of the access and entrances, signage building etc.
- External façade Illumination of heritage buildings of Bada would enhance the night-time experience of the place for the residents and visitors, besides creating an overall sense of security

**Cost :** INR 2.35 Cr

**Progress:** Project nearing completion



Moti Mahal Gate– Before Restoration



Post Office – Before Restoration



Moti Mahal Gate– Post restoration



Post Office – Post restoration





# Façade Restoration of Heritage Buildings

Gorkhi Gate— Before Restoration



Gorkhi Gate— Post restoration





# Façade Restoration of Heritage Buildings

Krishna Gate—Before Restoration



Krishna Gate—After restoration





# Maharaj Bada Pedestrianization & Development of Carbon Sink Park & Multi Basement Parking



## Project Features:

- **Pedestrianisation of Maharaj Bada** that includes non-dedicated NMT corridor, pedestrian zone, dedicated hawking/vending areas, green lawns, intermittent gardens, plantation, street furniture, etc.
- Development of **3 level multi-basement** 2-wheeler and 4-wheeler parking at the existing ground in front of Gorkhi palace complex with capacity ranging from **190 cars and 269 two wheelers parking**;
- Development of **3 Acre urban carbon sink park** in the CBD atop the proposed parking with pedestrian paved areas, water bodies, green cover, plantation areas, street furniture, etc.
- Project is part of Integrated Smart Road development

**Cost :** INR 360 Cr.

**Progress:** Project Commenced















# Conservation & Adaptive Up-gradation of Central Library as Digital Library



## Project Features:

- **Conservation & restoration** of Iconic Central Library
- **Digital Scanning of all books** ~ 50,000 books
- Dedicated space for **audio visual** and other forms of digital playful learning sessions with a retail shop for CD and miniaturised collections;
- Provision for a **digitally equipped Knowledge Management Centre** for exam preparation, vocational skill incubation, career consultation and mock tests attached with Classroom / Lecture space for e-learning classes and library management software tutorials;
- Provision of all **visitor amenities and facilities** along with auxiliary spaces for services and administrative usage;
- Comprehensive and integrated landscaping in consonance with Maharaj Bada revitalization plan;
- Development of **virtual and semi virtual platforms** for outreach, networking and online management of library activities including civil works for Remote Access Digital Library Lounge at 5 locations.

**Cost : INR 11.28 Cr.**

**Progress:** Conservation works commenced



## Conservation works in progress





# Conservation & Adaptive reuse of Moti Mahal Annexe Historic Building as ICCC

## Objectives:

- By means of suitable reuse, **protect and conserve** the historic building;
- To **conserve and adaptively reuse** the historic property with optimal resource usage and in a sustainable manner;
- Adaptive reuse of historic building for **Integrated Command Control Centre & GSCDCL office**.
- Provision of visitor parking & emergency vehicles
- **Comprehensive landscaping** of the entire site
- Development of boundary walls, paving, plantation, street furniture, etc.
- **Integration of all IT enabled smart city services** like – ITMS, Smart classrooms, SBM, Smart Parking, etc.
- Installation of state-of-the-art IT infrastructure including servers, video wall, monitors, backup systems etc

**Cost :** INR 32 Cr.

**Progress:** Project nearing completion





# Site conditions before upgradation





## On Site execution





# After Conservation







GWALIOR  
Smart City

# Thank You

