

Cooperation between the Southern Tohoku General Hospital in Koriyama and University Hospital Essen

Wolfgang Sauerwein

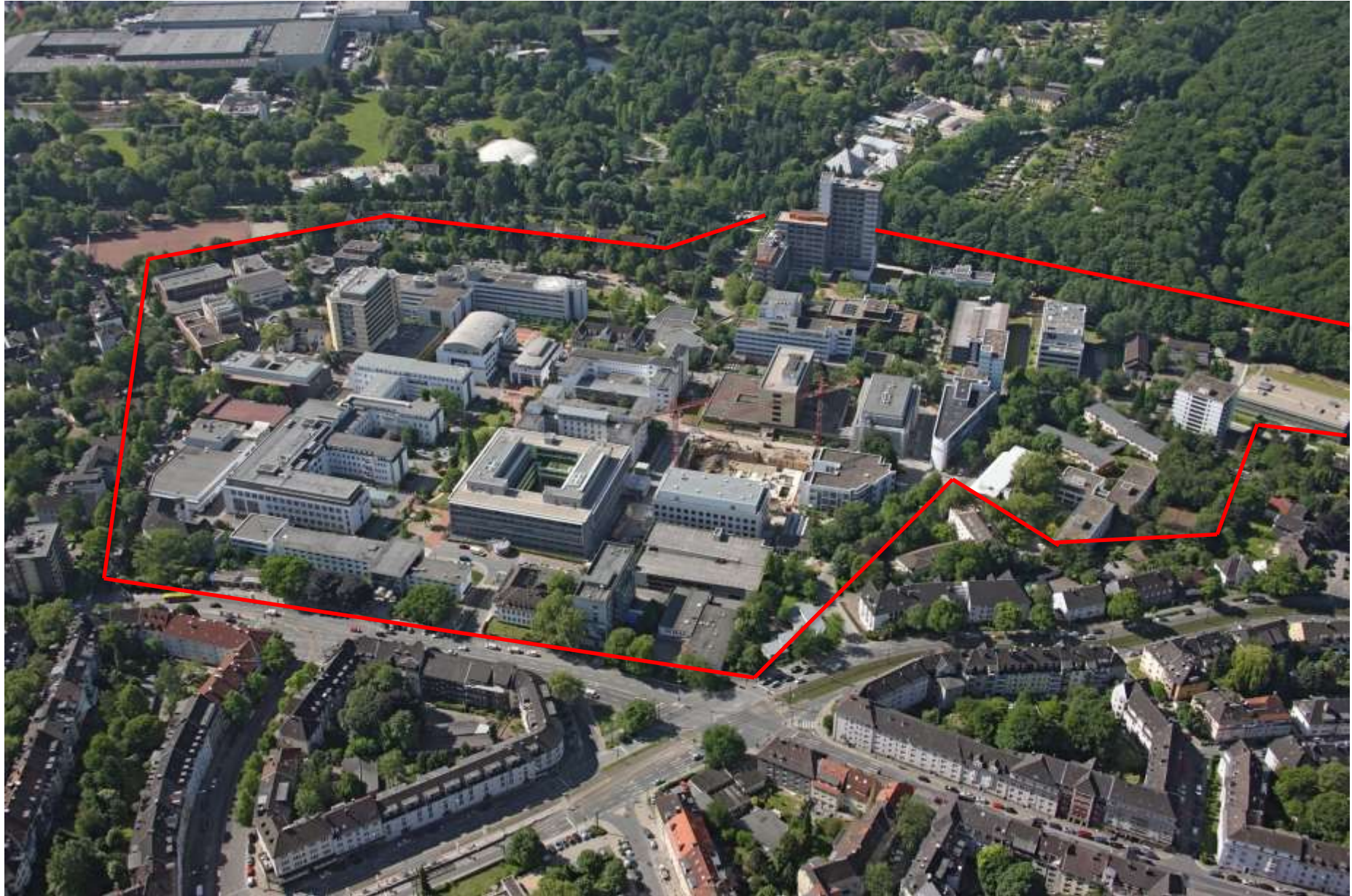


Medical Faculty and Hospital

- Site of teaching and research with more than 1,800 medical students
- Tertiary care hospital focused on three main areas; oncology, heart / circulation, and transplantation
- 50 clinics and institutes
- 1,300 approved beds
- Annual turnover of approximately € 700 million
- 165,000 outpatients per year
- 50,000 inpatients per year
- Approximately 6,000 employees, of whom more than 900 are scientists



University Hospital Essen



**University Hospital Essen runs Germany's largest
Comprehensive Cancer Center (CCC):
Westdeutsches Tumorzentrum (WTZ)
(West German Cancer Center)**

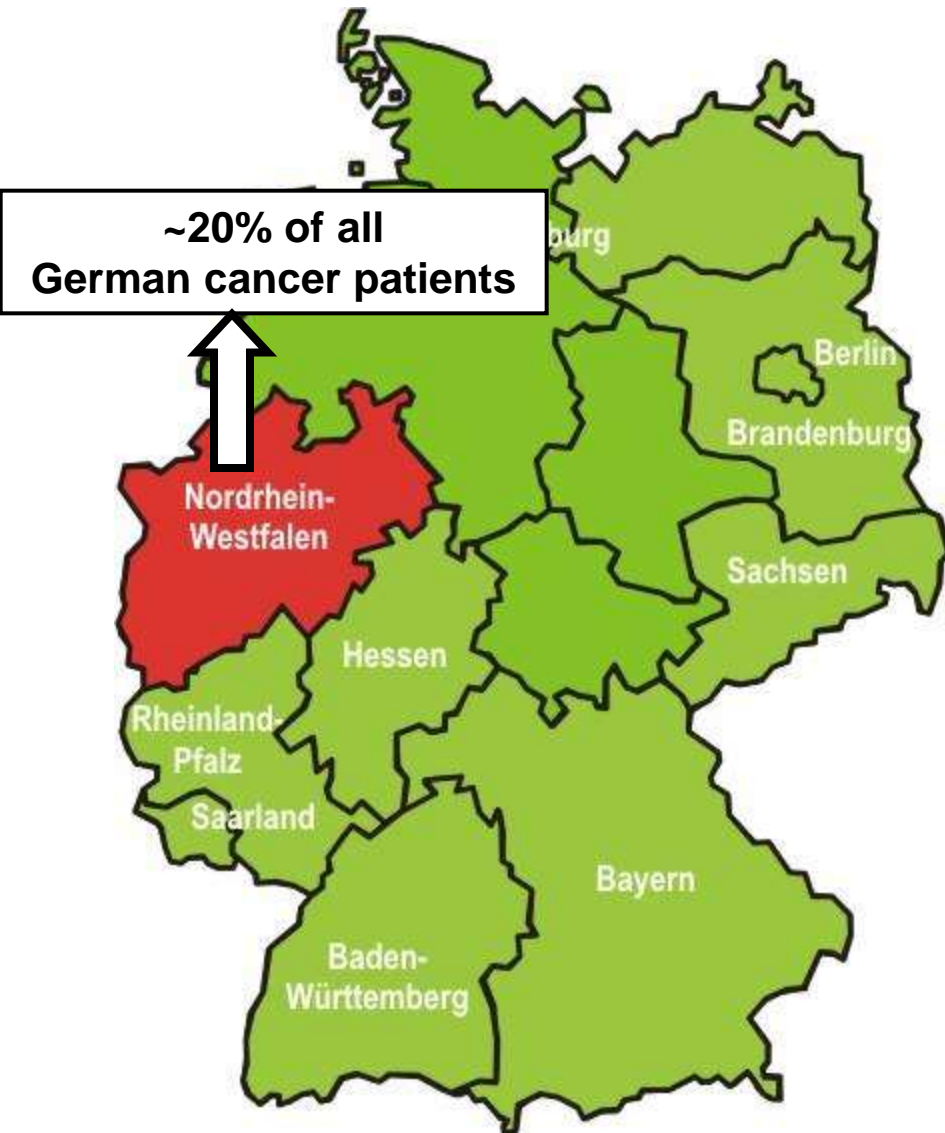
**90 % of the departments and institutes of University Hospital Essen
contribute to the WTZ**

**21 Clinical
Departments**

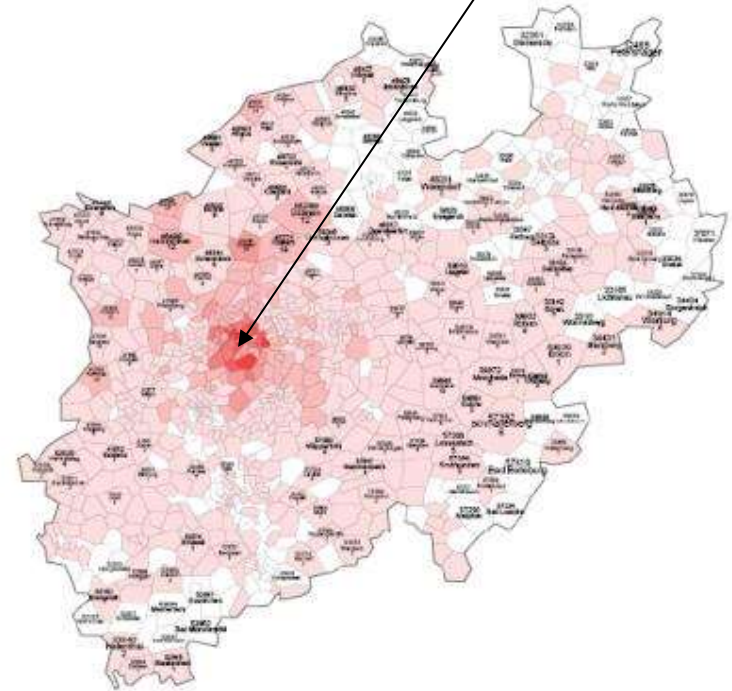


**16 Research
Institutes**

WTZ Catchment Area



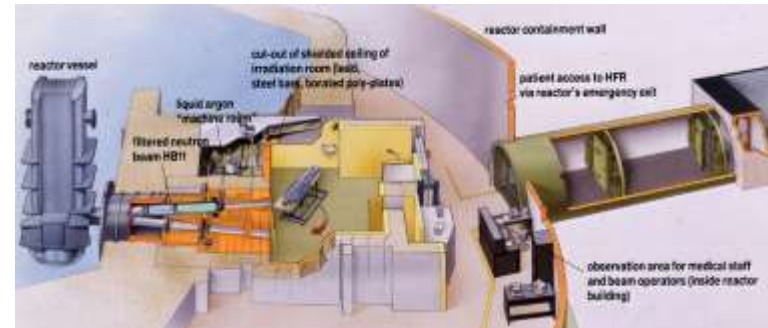
Access to 8 million residents in the Ruhr area



→ High potential number of patients for clinical studies

Particle Therapy in Essen Since 1978

- 1978 Inception fast neutron therapy
- 1991 Inception of proton treatments for eye tumors (in cooperation with Centre Antoine-Lacassagne, Nice, France)
- 1996 Clinical trials of boron neutron capture therapy (Petten, Netherlands) The European BNCTeam
- 2007 Treatment with high-energy neutrons (in cooperation with iThemba LABS, South Africa)
- 2013 Inception Westdeutsches Protonenzentrum Essen
- 2014 Establishment second Department for Radiotherapy



Actually 3 cyclotrons running at the University Hospital Essen



MEDIZINISCHE FAKULTÄT
DER UNIVERSITÄT DUISBURG-ESSEN

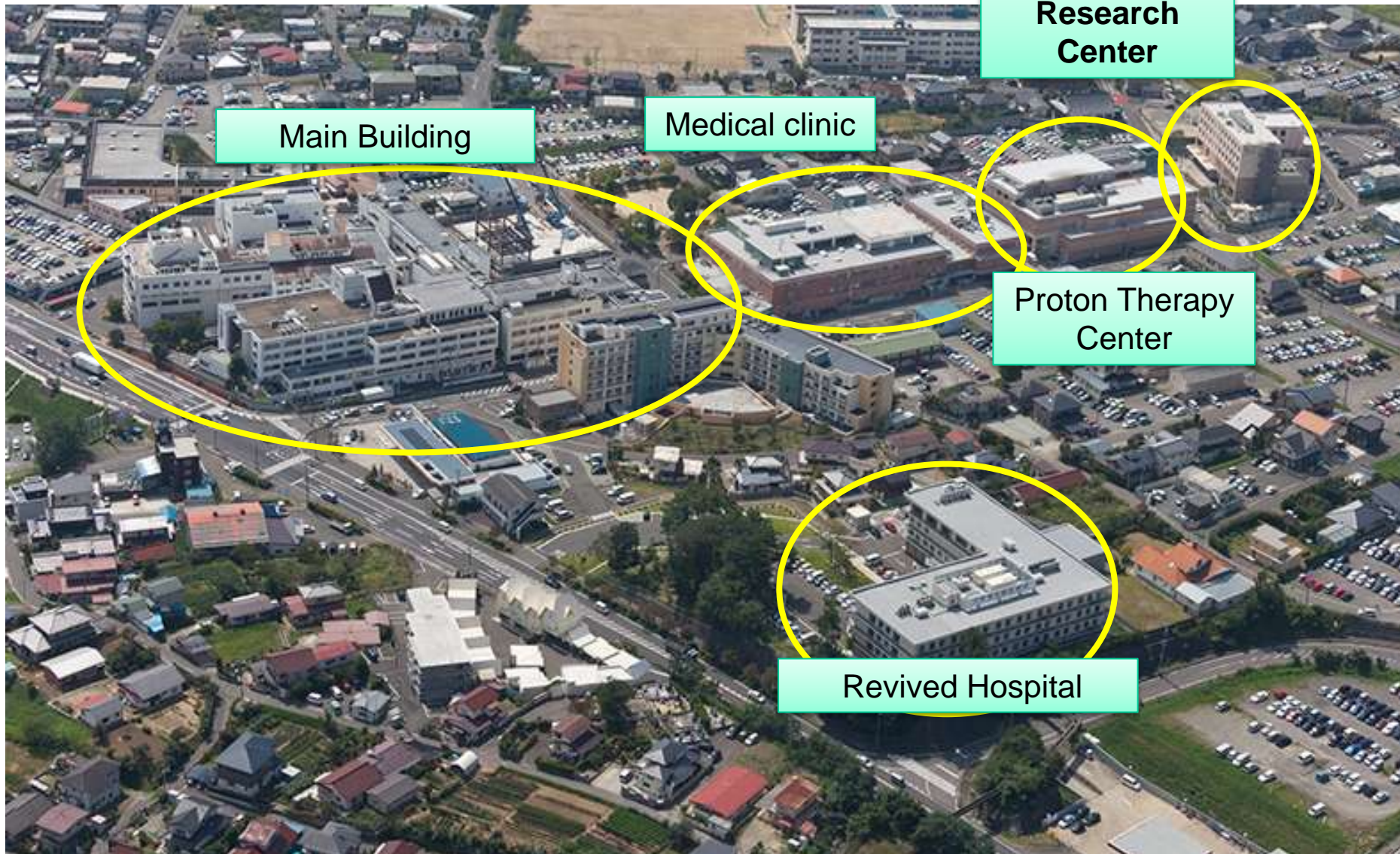


The Southern Tohoku Group

Health Facilities: 70
General Hospitals : 6



Southern Tohoku General Hospital



<http://www.minamitohoku.or.jp/index.php>



MEDIZINISCHE FAKULTÄT
DER UNIVERSITÄT DUISBURG-ESSEN



February 2014

Besuch in Fukushima mit Garrelt Duin, Minister Minister für Wirtschaft, Energie, Industrie, Mittelstand und Handwerk des Landes NRW

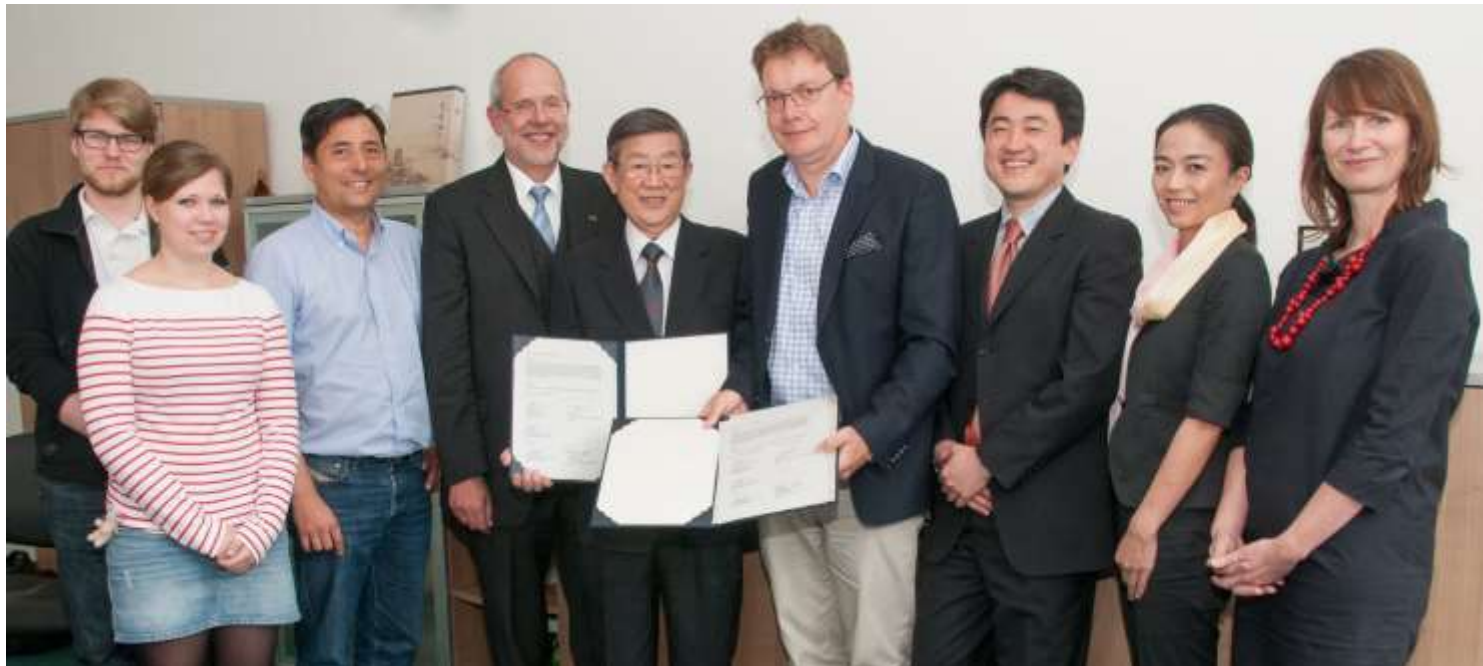


MEDIZINISCHE FAKULTÄT
DER UNIVERSITÄT DUISBURG-ESSEN



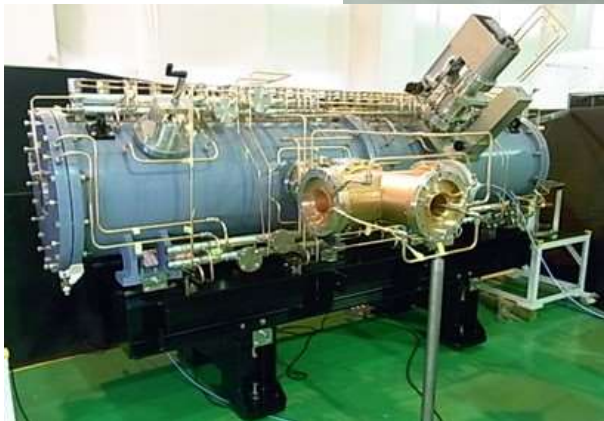
20. Juni 2014

MOU between UK Essen and the Southern Tohoku General Hospital Group





BNCT for German patients?



Vielen Dank für Ihre
Aufmerksamkeit!

ご清聴ありがとうございました！

